

OCTOBER, 1964
ONE SHILLING

Table Tennis

The Official Magazine of the
English Table Tennis Association



The Blackpool League Group, winners of the E.T.T.A. Coaching Competition for 1964, with their prizes. Leading coach was Syd Frohlick (centre back row) and his assistants were Frank Kenny (left) and Bob Wood (right).

The Under 16's team (left to right) Barry Lowther, Leed Cropper, Della Bingley, Garry Tunnicliffe, Steven Clegg, Susan Crowther, Barbara Kirkham, Nigel Buffham, David Murty.

Table Tennis

Official Magazine of the

English Table Tennis Association

Edited by W. HARRISON EDWARDS

Published by Walthamstow Press, Ltd., Guardian House, 644 Forest Road, London, E.17

Vol. 23

OCTOBER, 1964

No. 1

World Championships Restrictions

NO more passengers or fellow travellers. That is the brake put on the World Championships in Ljubljana, Yugoslavia, next April, to curb the ever-increasing number of entries.

Numbers have been steadily going up and there were signs of them getting to the stage when the championships could become unmanageable.

Already extreme pressure is being placed on organisers, and concern is being felt at the top level that strength and endurance are playing a greater part in achievement than pure skill.

The matter, originally raised at Peking, was thoroughly thrashed out at the Prague meeting of the I.T.T.F. Advisory Committee on August 30-31. Various schemes were considered and eventually a sub-committee came up with an acceptable plan, which should mean a reduction of 50 players in the men's singles and 30 in the women's as per the Prague entry of 1963.

TEAM STRENGTH

For the individual events each country will be limited to those players taking part in the Swaythling Cup (men) and Corbillon Cup (women), plus possibly one extra. In addition each country will be allowed to claim as many extra places as members of their team figure in the first 16 of the I.T.T.F. Classification List.

This almost amounts to a personal invitation to the top ranked players, but it is a privilege that cannot be transferred should the ranked player not be included in the team.

Countries wanting to enter the extra player in addition to the team members (five men and four women) have to give reasons why he or she should be admitted. A player who had recently beaten the No. 1 of his country; or who had a good record against foreign opposition during the season, would be deemed a suitable candidate.

The use of the classification list, of course, favours the stronger countries and in the case of China it would mean they can have a team of ten men—five from the Swaythling Cup, the extra one, and four from the World list.

But up to now they have always brought teams of anything up to 40 in number.

England will be limited to the minimum among the men, but we could expect to qualify possibly seven women.

The same principles will apply in the doubles, the entry for which will be half the singles entry and where it means an odd player, another may be brought in to complete a pair. In mixed doubles the entry will be based on that for the women's singles.

The exception to the above limits is in the case of the host country, who under existing limits can have up to 32 players in the singles. This number will in future be reduced to 16, but not until after the 1967 Championships as Yugoslavia and Australia (1967) have based their plans on this basis.

WAITING GOVERNMENT AID

Meanwhile, England's immediate concern is the delayed European Championships at Malmo on November 22-29. A maximum team of five men and four women has been chosen, but it is by no means certain that they will all make the trip. This will depend on what financial aid is forthcoming from the Government. The necessary application for assistance to take more than a minimum team has already been submitted.

So players like Dennis Neale, Mike Symonds, and Irene Ogus, the additions to the regulars, Chester Barnes, Brian Wright, Ian Harrison, Mary Shannon, Diane Rowe, and Lesley Bell, keep their fingers crossed.

CENTRAL COMES OF AGE

By B. F. G. TAGG

ON Tuesday, August 18, 1964, the Central Table Tennis League, catering for clubs within a three-mile radius of Central London, came of age. The event was suitably commemorated at a cocktail party, held in the City Cellars of Whitbreads, to which were invited all club secretaries, members of the committee, past officials of the League and a few noted guests.

The chairman, Geoff James, jokingly remarked that the date had not been fixed in the middle of the holiday period to keep the attendance down, but because it happened to be the exact date of the inauguration of the League, 21 years previously.

The celebration was well attended

and everyone appeared to enjoy themselves to the full, a state of affairs which could be attributed more than a little to the excellent arrangements made by Whitbreads for our refreshments.

Geoff, deputy chairman of the E.T.T.A., a stalwart of the Middlesex T.T.A., and a founder-member of the Central League, recalled that 11 clubs originally formed the league to provide relaxation for those on fire-watching duties. "And, contrary to popular belief I played myself in those days," he said.

No one at that time envisaged the continuance of the league beyond the end of hostilities, but, with the great upsurge of interest in the game at the end of the war, the League grew rapidly and its present complement is over 60 clubs. At one time there were around a thousand playing members making it one of the largest leagues in the country.

As an appreciation of Geoff's notable record of having served on the committee for the entire life of the league, first as secretary but for the most part as chairman, he was presented with a silver salver, suitably inscribed.

The presentation was made by Mrs. Sheila Snow, formerly Miss Wright-Swatman, who has also been connected with the Central since its inception.

The secret of the presentation was well kept and the chairman looked as astounded as he was delighted with this expression of sincere appreciation in his unceasing and indispensable efforts to give the League a solid foundation.



GEOFF JAMES receives his silver salver from SHEILA SNOW.

ESSEX OPEN PLANS

THE "best ever" Essex Open Tournament is planned for this season and, already, arrangements are well in hand. The venue, the Harlow Sportcentre, has all the makings of a tournament organiser's dream. Twelve tables will be used in one hall; changing and washing facilities are excellent; there is a good canteen and a spectators' balcony. All that is wanted now is a good entry and the week-end of 16th/17th January looks like making Table Tennis history. Tournament Secretary is George Wenham, 55 North Road, Brentwood, who will have entry forms available shortly.

Since last season there have been several changes in the County administrative set-up. A state of near crisis was reached when, by the time of the Annual General Meeting, only about half of the major positions were filled. Fortunately, the difficulties have been overcome. Harry Walker returns as General Secretary and George Wenham has taken over from Dick Frost as Secretary for Junior Affairs. George is not, of course, a newcomer to the post. Dick Frost, after a tremendous season as both Junior Secretary and Coaching Liaison Officer, has also relinquished the latter position in which he is succeeded by Clacton's Dennis Arr.

Ron Langner's return as Match Secretary coincides with the decision to operate only two County Senior teams this season—in the Premier Division of the National County Championships and the Bernard Crouch Trophy Competition. Without an entry in the Second Division (South), competition for places in the County teams will be stronger than ever and could provide the incentive to bridge the very slender gap which separated Essex from the Premier Division Championship and the Junior/Senior "double."

News received, so far, from leagues is encouraging, with increased membership being reported from several quarters. An entry of seventy-eight teams in the Chelmsford League has meant the introduction of a further division, making seven in all. The Romford League, also, is making a big attempt to keep their members interested in League affairs and has issued the first of what is intended to be a monthly Newsletter, for circulation among clubs.

Roy Hayes.

ATTENTION

CLUB SECRETARIES

Send for free literature

MSP

(SPORTS EQUIPMENT) LTD.



Present a brand new range of quality tables for the club enthusiast. 9' x 5' with ½" top. £14 8s. Any thickness top available. HAVE ONE ON A WEEK'S FREE TRIAL. Just send £2 deposit. Balance due 7 days from delivery. If not satisfied then your money will be returned to you without question. Carriage £1.



MSP (SPORTS EQUIPMENT) LTD.
HYTHE, SOUTHAMPTON,
HANTS.

ANTONIN MALECEK

IT is with deep regret that we record the death of Antonin Malecek, of Czechoslovakia, at the age of 55.

Malecek played in the first World Championships in London in 1927, and was a member of the Czech team which won the Swaythling Cup in 1932.

He was present at the World Championships in Prague in 1963, and delighted old players and officials by showing his scrapbook, which contained so much of a history of Czech and ever world table tennis during his playing career.

MASTER POINTS ENTRANTS

by GEOFF HARROWER

WHEN last season closed with a membership of 42 leagues, embracing 15,003 members (approximately 22% of the adult membership of the E.T.T.A.), it was felt that the Master Points Scheme had made a very big stride forward, in its first season. However, the acid test, was still to come. Would those leagues remain in membership? Would fresh leagues come forward?

Any doubts have speedily been dispelled. Although most leagues do not start their programme until early October, already (by mid-September) the staggering total of 52 leagues have completed the Entry Card for the coming season—28 from last year and 24 new ones. There seems little doubt that the great majority of the remaining 14 leagues from last year, as well as many new ones, will join before the closing date, the 15th December.

This late date has been arranged because one or two leagues are known to be conducting referendums amongst their members. For future seasons, however, the closing date will be advanced to the 15th November, the same as the E.T.T.A. date for entry from leagues.

The 24 leagues who have already joined as fresh members are:— BARROW, BEDFORD, BIRMINGHAM, BRIDGWATER, CHESHUNT, CHILTERN, ELY, HEREFORD, IPSWICH, LEATHERHEAD & EPSOM, MANCHESTER, MID-CHESHIRE, NELSON, NORTH HERTS, NORTH MIDDLESEX, NORWICH, NOTTINGHAM, REIGATE & REDHILL, ROMFORD, SLOUGH, SOUTH LONDON, STOWMARKET, WATFORD and WORCESTER. These 24 leagues had a membership in excess of 9,000 last season, and thus the 52 leagues who have already completed the card have a membership in excess of 20,000—an increase over last season of 33½% already!

It is not only among the leagues, however, that increased support is forthcoming. Last season only the South-East Midlands League of Leagues were in membership amongst the multi-county organisations. This year they are joined by the East Anglian, Midland Counties and Western Counties, thus bringing in all the known multi-county leagues.

Perhaps an even more significant factor has been the rush to enter Junior and Veteran events in Open Tournaments. To date, only those tournaments taking place before Christmas have been asked whether they wished to include their boys, girls and/or veterans singles, if held. All bar one of those tournaments replying to date have entered every possible event. The sole exception is the Kent Junior.

Entry is even being made from areas where, at present, no other support is forthcoming. For example, the Merseyside Open has included all events, although the Liverpool League are not members. Ironically, the Merseyside is the same date as the Kent Junior!

On the 5th September the M.P.S. Committee held a long meeting, and a number of very important subjects were fully discussed. Shortage of space precludes more than a brief outline, but please do write to me at 11, Lyneham Road, Luton, Beds., if you want further details.

ENTRY FEES—3d. per head of TEAM PLACE? Now that the E.T.T.A. are changing over to the team place, from the 1965/66 season, it has been suggested that the M.P.S. should do the same. Obviously there is much to be said for this, but the Committee considered that there was a slight balance in favour of retaining the "3d. per head" which was widely understood, and had become something of a slogan. It was agreed, how-

ever, to take all shades of opinion on this and to bring the subject up again in twelve months' time. One obvious problem was exactly how much was needed to cover leagues playing three, four or five a side, to get roughly the same income as at present.

It was, however, agreed to recommend to the National Council that, from next season, leagues could enter their complete programme (i.e. as well as the normal weekly league matches their closed championships, divisional championships, team knock-outs, pairs championships, etc.) for an inclusive fee of 6d. per head.

POINTS AWARDS AT THE MASTERS TOURNAMENTS. Extensive consideration was also given to this subject, it being appreciated that it was very much harder to win matches in the top groups, where invariably eight players on the National Ranking List were competing than in the lower groups, where perhaps, younger players were given an opportunity of competing. In fact, it was felt that to win all seven matches in the top group was harder than winning a major open tournament. Therefore the following points awards were agreed:—

Number of wins against other players in group	Group 1		Group 2	
	Men	Women	Men	Women
7	900	675	160	140
6	675	510	120	105
5	480	360	85	75
4	300	225	60	55
3	190	135	40	40
2	90	70	25	25
1	45	40	10	10

LIAISON WITH OTHER COMMITTEES. Plans were approved for close liaison with the Selection and the Open Tournaments Committees.

OPTIONAL ENTRY OF OPEN TOURNAMENTS. One genuine criticism which had been levelled at the Scheme was that the whole Scheme should be optional. Members of the Committee felt that the Scheme had now proved itself, and thus they are recommending to the National Council that, from the start of next season, all Open Tournaments shall be given the option of entering events into the M.P.S. Tied up with this is the proviso that all intending entrants must know well in advance whether points are being awarded or not, and this is one item where liaison with the Open Tournaments Committee is essential.

FUTURE OPERATIONS. Consideration was given to those areas where little or no progress had been made towards popularising the M.P.S. The Committee felt that no special campaign was necessary, as it was obvious by now that the Scheme was a great success, and that the majority of areas would want to come in within the next year, or two years at the most. It was, however, agreed to talk to National Council members in these areas, in case there were any special problems, or additional information was needed.

INTERNATIONAL CLUB. It was agreed to ask The International Club for assistance in distributing Points Certificates, and also with the clerical work, it being borne in mind that international players were the main beneficiaries from the money collected from the Scheme.

Next month I hope there will be space to give a complete list of players who have gained Club Master or higher status. Therefore players who have sufficient points, but who haven't sent them in yet, should get a move on!

SHOCKS FOR SELECTORS

No. 1's BOTH BEATEN

ENGLAND table tennis selectors, busy studying form for choice of the European Championships team, were given a nasty shock in the Master Points Tournament at Stanmore on September 19.

First Chester Barnes, back in the fold after the lifting of his international ban crashed 9-21, 7-21, to Mike Symonds in his first match and within minutes Mary Shannon, the top woman player, was crumbling to defeat against Irene Ogus, of Middlesex, at 20-22, 21-23.

There could hardly have been a more disheartening start but as players began to adjust the tempo, things settled down to more or less normal.

Barnes suffered yet another defeat when Dennis Neale, of Yorkshire, got the better of him at 21-18, 17-21, 21-5, but he came back into his own to beat Ian Harrison and Brian Wright, and finish with five wins.

Wright finished top of the men with six wins, his only loss being 18-21, 21-12, 16-21, to Barnes. Neale also had five wins, his losses being to Wright and Harrison.

Symonds did not maintain his good start and lost to Harrison, Merrett, Wright, and Neale.

Bobby Stevens was unable to play owing to a sprained ankle, while Bryan Merrett experienced trouble with his wrist and did not complete his programme.

In Group II of the men Stuart Gibb, the Essex junior, and Tony Piddock, of Kent, finished top with six wins each.

LESLEY BEATS DIANE

Lesley Bell, swept through the women's event without loss and marked up her first-ever win over Diane Rowe at 21-14, 21-19 (time limit). Miss Bell while able to beat any other player in England has always found Miss Rowe a stumbling block but now she has marked up her first win it could be the break through which could take her to the coveted No. 1 spot.

Miss Rowe, sadly out of practice was also heavily beaten by Mary Shannon at 9 and 10. But Miss Shannon was to finish joint second with

Miss Rowe for after her opening defeat against Miss Ogus she, too, lost to Miss Bell.

Miss Ogus, winner of the East of England Open, was the surprise of the event and upset the existing rankings by finishing fourth. Her only losses were to Miss Bell; Miss Rowe, from whom she took a game; and Cynthia Blackshaw.

Lesley Proudlock, of Yorkshire; Beverley Sayers, of Essex; and Alma Taft, of Middlesex; all finished with six wins at the head of Group II.

FINAL POSITIONS

Men: Group I: B. Wright (Middlesex) 6; C. Barnes (Essex) 5; D. Neale (Yorkshire) 5; I. Harrison (Glos.) 4; B. Merrett (Glos.) 3; M. Symonds (Lancs.) 3; A. Lindsay (Middlesex) 1; B. Hill (Lincs.) 0.

Group II: S. Gibbs (Essex) 6; A. Piddock (Kent) 6; D. Lowe (Surrey) 5; C. Warren (Surrey) 5; R. Morley (Glos.) 3; A. Rhodes (Middlesex) 1; A. Robinson (Middlesex) 0.


Women: Group I: L. Bell (Essex) 7; M. Shannon (Surrey) 5; D. Rowe (Middlesex) 5; I. Ogus (Middlesex) 4; C. Blackshaw (Yorkshire) 3; J. McCree (Essex) 3; P. Dainty (Yorkshire) 1; J. Canham (Herts.) 1.

Group II: L. Proudlock (Yorkshire) 6; B. Sayer (Essex) 6; A. Taft (Middlesex) 6; D. Fitzgerald (Lancs.) 3; M. Hicks (Middlesex) 3; C. Holes (Hants.) 2; G. Sayer (Essex) 1; P. Venus (Surrey) 1.

ALL

the Best Players
are still wearing

LOUIS HOFFMAN CLOTHING

Ask your local sports store to show you the new illustrated catalogue of the LOUIS HOFFMAN clothing range with the  symbol. In case of difficulty write to:

LOUIS HOFFMAN

(CLOTHING)
LTD.

180 BRICK LANE, LONDON, E.1.

SHOREDITCH 7391

EUROPEANS TEAM

AFTER the Master Points Tournament the following players were selected to represent England in the European Championships at Malmo, Sweden, from November 22 to 29, subject to there being the necessary funds to send a full team.

Men: G. C. Barnes (Essex), B. D. Wright (Middlesex), I. O. Harrison (Gloucestershire), D. Neale (Yorkshire), M. Symonds (Lancashire).

Women: M. Shannon (Surrey), D. Rowe (Middlesex), L. Bell (Essex), I. Ogus (Middlesex).

THE NEW CHOICE

Bright-eyed Irene Ogus, 20-year-old Middlesex secretary-bookkeeper, has emerged from out of the blue to be the surprise choice for England's team for the European championships at Malmo, November 22-29.

Her selection follows her shock win over Mary Shannon in the Master Points Tournament and her success in the East of England Open.

EYE-OPENER

Irene has been around table tennis for some five years, progressing through Middlesex Juniors and the County "seconds." But no one quite associated her with a place in the England team until the eye-opening performances of this season.

Her progress follows Coaching from Harry Venner in the Summer months and is the reward of hard training at Wembley, where she is secretary of the Wembley Institute T.T. Section, and at Becontree.

She won the Consolation Singles at the last English Open, and during the Summer won three gold medals at the Maccabiah Games in Israel.

Irene, who started her table tennis career at the West Ealing Club, is fond of music and is a cousin of Joyce and Lionel Blair of Television dancing fame.



IRENE OGUS in action; and left, she does the E.T.T.A. recommended exercises.



SIMONS RESIGNS

AUBREY SIMONS has resigned as chairman of the Selection Committee due to pressure of business. Ivor Eyles will act as caretaker chairman until the National Council meet on December 5.

Johnny Leach and Jeff Ingber are newcomers to the Selection Committee, joining Len Adams and Ron Crayden.

Crayden has been appointed captain of women's team and Adams captain of the men's side.

KEEPING FIT

TABLE tennis players in the main have not paid a great deal of attention to physical fitness. Most have been content to rely on playing alone to build them up and enable them to pace their matches.

But this is no longer good enough. The modern fast game calls for athletic ability to an even greater extent as crowded entries lead to championships becoming a test of endurance in which that little extra fitness can tip the scales.

FOOTBALL TRAINING

Players like Johnny Leach realised long ago the value of being super fit and indeed Johnny trained with Crystal Palace Football Club before winning his world titles.

The importance of all this cannot be overstressed and the E.T.T.A., determined to bring it home, and set the players on

the right line, have drawn up a circuit training schedule, which, while not directly associated with actual play aims at building up fitness.

Exercises are designed for individuals to show personal improvement over time, but there is no question of players competing against each other in the tests.

The exercises, which should be practiced for five to ten minutes daily, either in the morning or at night, have been divided into two groups—"A" for stamina, strength and speed; and "B" for flexibility.

Appreciation

WE are indebted to Michael Maclaren for many of the pictures used in this issue of Table Tennis.

Readers requiring copies can obtain them at the usual rates from Michael Maclaren, 9, Woodcote Avenue, Wallington, Surrey.

Full Programme

In addition to county teams, Kent League, and the Schools Competition, the County Association are running their usual complete programme of Club Knock-out competitions (W. H. Cripps President's Shield for Men, Teresa Holmes Trophy for Women), Kent Messenger Individual competition (on Daily Mirror lines), Kent Open, Kent Closed, Kent Junior Open, Kent Junior Closed, and County Umpires' Knock-out competition.

ROOMS AVAILABLE London W.C. District. SUITABLE FOR T.T. CLUB

Apply
Alec Brook (Sports Equipment) Ltd,
124, Euston Road, London, N.W.1.
(Tel. Euston 3772).

NEW H.Q. FOR E.T.T.A.

ON September 9 the Association moved office from the not-quite-so-grand Grand Buildings in Trafalgar Square to fresh new premises at 26/29, Park Crescent, W.1, very close to the pleasant Regents Park.

The offices are now situated on the third floor of a building occupied by the Central Council for Physical Recreation

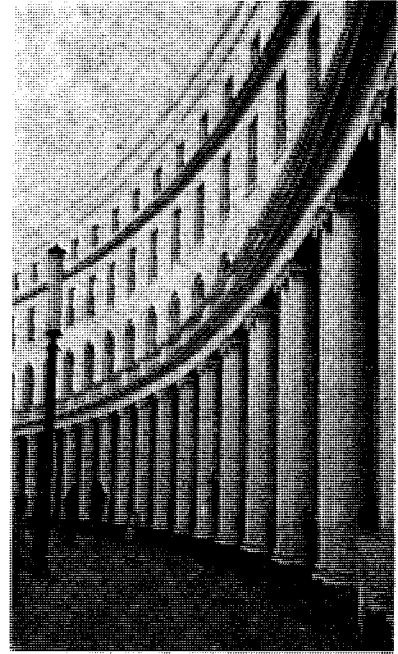
who rent out space to various sporting associations. They comprise two spacious well-lit rooms and are staffed by the Association's secretary, Peter Lowen, a shorthand-typist, Diana Sage, and a part-time assistant, Mrs. V. Martin. Between them this hard-working trio sends out 600/700 letters each week, apart from dealing with innumerable other enquiries and general administrative work.



DIANA SAGE



PETER LOWEN



THE NEW OFFICES

LEICESTERSHIRE NOTES

LOUGHBOROUGH'S RAPID GROWTH

by PHILIP REID

INCREASED activity on all fronts is the welcome first report from Leicestershire. Pride of place goes to the **Loughborough League**, who, since their formation three years ago with eight teams, have grown to 40 teams in four divisions.

John Grimley, their live-wire secretary, has been responsible for much of this rapid growth. His "Mini" has travelled many miles along North Leicestershire lanes during the summer to persuade any doubters to join besides a number who, before John's visit, had no intention of joining!

Hinckley Youth League held a coaching rally on September 26 as a curtain-raiser to their season. Secretary John Shade has given the league new life and it is hoped this upward trend will continue.

Leicester Youth League will be making the 1964-5 season its final one after more than 20 continuous years in membership of the Leicestershire Table Tennis Association. Its passing is, however, not to be mourned, for the league

is to become part of the **Leicester and District League**. By becoming part of the senior league it is hoped to prevent the big losses to table tennis which occur when youth league members outgrow their own league. The idea came from the local youth officer, Roy Fishenden, who is a newcomer to the city but has already impressed local officials with his lively and helpful approach.

The **Leicester and District League** have 15 divisions with 12 teams in each. For some years the committee have been trying to bring the divisions down to teams of 12 and have now succeeded. This means a later start and an earlier finish — to everybody's satisfaction.

Dennis Smith reports all is well at Melton and it is expected the **Coalville League** will once again have a good season.

Coaching during the summer was well supported. At the conclusion of his 15-week course at Loughborough, John Hubbard was presented with book tokens by his grateful pupils. With the co-operation of the city and county education authorities, successful classes were held throughout the summer. Congratulations to John Hubbard who has been awarded his teaching theory certificate.

Peter Harrison has been carrying on the good work at Blaby Boys' Club and Tom Whiteman has spent many hours with the Soccer Pools Juniors.

In representative table tennis Leicester will have six teams in the Midland League and a junior team in the National Counties' Championships.

WARWICKSHIRE NOTES

GUNNION ABSENT

WARWICKSHIRE, who will this year be fighting to regain their place in the Premier Division, have received a shock. Ralph Gunnion, the No. 1, is off to America on an exhibition tour starting October 3rd, and will not be back until next May. Therefore, the brunt of our promotion bid will fall on Derek Backhouse, Derek Baddeley, Maurice Billington, and Bill Gallagher.

Fortunately, we still have Doreen Griffiths and Barbara Carless, and improving Ingrid Sykes, from the ladies' angle.

The County second team, who were also relegated, will be able to call on all of their last season's team, and should have a good chance of promotion, providing the first team win their division.

The Junior County side will have some new faces, and it should be an interesting tussle for the boys in as much as we have at least eight players of approximately the same standard with Philip Richardson of Coventry, and Ray Heath, Barry Ansell and Ron Judd of Birmingham, likely to prove the stronger players.

Incidentally, Derek Backhouse and Derek Baddeley have both married in the close season.

The Warwickshire Cup for club teams will again be running this season and should attract a larger entry. Clubs are advised to send in their entries as soon as possible.

There is also a possibility that this season we shall be having a Warwickshire Closed, due to a kind offer from the Leamington Association.

Roger Morris.

ST. BRIDES TABLE TENNIS CLUB

Bride Lane, Fleet Street, E.C.4.
has some vacancies

The Club meets at 6 p.m. on Wednesdays and Fridays. Write to Hon. Secretary, Miss M. Robins, 129a Green Wrythe Lane, Carshalton, Surrey.

THE MAGNUS EFFECT

by Robert E. Chaimson

SEEING Hans Alser win the U.S. Eastern Table Tennis Championship brought to mind once again the importance of spin in modern table tennis. This importance has been accentuated by the recent emphasis on aggressive play and by the use of the more effective inverted sandwich rubber, hence a few words on the technical aspects of this subject would be useful.

The variation of the flight path due to rotation of a ball is well known. Thus we hear the golf terms *slice*, *hook* and *fade* and the baseball terms *outshoot*, *slider* and *drop*. However, the *why* of this *cause and effect* is known only to those who have made a study of this subject.

The first scientific explanation of this phenomenon was given over 100 years ago by Professor Magnus. Hence it has been referred to as the "Magnus Effect." His explanation was given in a paper entitled *On the Deviation of Projectiles*, published in the Memoirs of the Berlin Academy in 1852. Later in 1877 the famous Lord Rayleigh presented a scientific paper *On the Irregular Flight of a Tennis Ball*, in which the theories concerning this effect are derived by the use of differential equations. I hope to give an explanation in simpler terms.

RELATIVE MOTION

For the moment let us consider a ball moving from left to right in air, without spin. The relative motion between the ball and air is shown in *sketch A*, and the lines show how particles of air are deflected by the flight of the ball. Next we can consider a ball hit with topspin and we can visualise a streamline pattern of constant circulation around the ball as shown in *sketch B*. Now considering both the spin and the forward motion and showing the composite flow pattern in *sketch C*, we observe the streamlines are crowded

at the bottom and spread apart at the top, thus the air velocity below the ball is greater than the velocity above the ball.

From Bernoulli's theorem we know that air pressure is lowered when velocity increases and the pressure is raised when the velocity decreases. In other words, if a ball, hit with topspin, moves forward, it is acted on by this force and gravity. Hence the ball is directed down into the table as shown in *sketch D*. Further, the more topspin imparted to the ball, the more downward curvature there will be.

We have now seen that a ball hit forward with topspin will deviate from the path followed by a ball with no spin travelling at the same velocity. By similar reasoning we can show that the path of a ball hit with sidespin will deviate from a straight path, as shown in *sketch E*, and it is possible for the striker to obtain a larger penetration angle.

OPPOSING FORCES

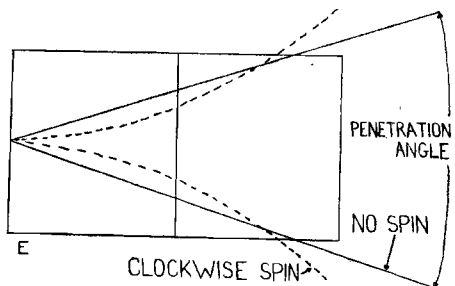
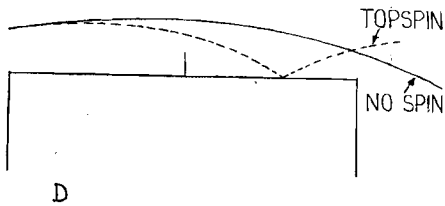
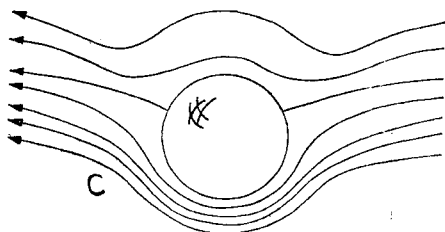
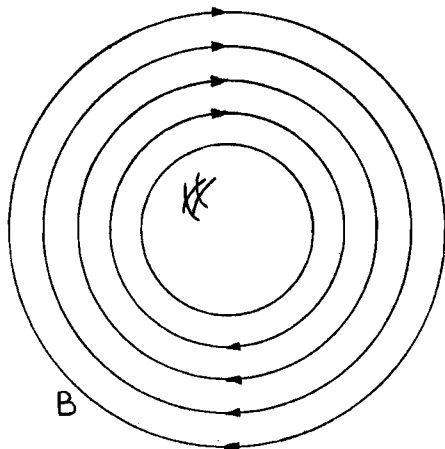
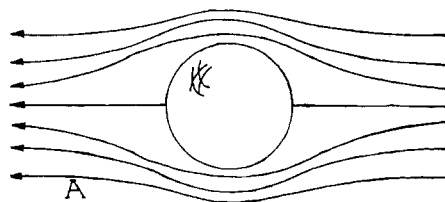
The effect of this force upon the path of a ball hit with underspin or "chop," however, is less than the previous cases. We repeat that with topspin the Magnus Effect and gravity both act to force the ball downward. But with "chop" the two forces oppose each other since gravity always acts downward.

To simplify this discussion we have assumed the axis of spin to be horizontal in case of topspin or vertical in cases of sidespin. Of course the spin can be imparted with the axis of rotation at almost any angle with respect to the table giving effects of both topspin and sidespin in combination. I wager that Professor Magnus would have been amazed, as I was, by Mr. Alser's use of spin.

CONNELL HONOURED

IN recognition of his long service to table tennis, the Staines and District League have elected **Ted Connell** to Life Membership.

Connell has been the Staines chairman since 1948 and has also played a big part in county administration, having served Middlesex as chairman for ten years.



MARY SHANNON
(ENGLAND NO. 1)
and
BRIAN WRIGHT
(ENGLAND NO. 2)
will give exhibitions
anywhere in England
For details:
11 SOUTH NORWOOD HILL
LONDON S.E.25
LIV 1918

Maestro's Tribute To Table Tennis

by Professor GEORGES CUNELLI

AS the founder of the International Table Tennis 'Peace' Club, I ended my 'smashing' life on May 25, with sorrow in my heart.

I was bitten by the 'Ping-Pong' microbe during the last noisy period of the Second World War. To escape 'the indigestible manna from heaven' I was invited by the manager of the apartment house where I was staying to dive for safety into the basement, which was then the kitchen, where I found a 'Ping-Pong' table. It was a marvellous escape from the horrible noise outside, provided one concentrated on hitting the small white ball with the bat.

But the kitchen was small and the table was large! To reach a shot we frequently scratched the ends of the table with our tummies. When I managed to hit the ball, for the first time, I was in ecstasy! The next day I invited the other tenants to play. A week later I was beating all my teachers with the 'beginner's only' stroke — the half-volley! I should mention that I was already at this time a 'double-veteran,' approaching 60 years of age. Later I equipped

myself with a new bat, and began to look for an apartment more suitable for table-tennis than for living in!

In 1946 my private 'Peace' Club was born. There was no membership fee, no smoking, only progressive, sportsmanlike behaviour was insisted on. We had an excellent coach, Wally Hall, and he gave us invaluable training. The Club was at the top of a house belonging to the family of the famous psycho-analyst Freud.

LANDLORD IN SUPPORT

During competitions on Thursdays the whole house shook, and the tenants below complained of seasickness, saying they were obliged to wear earplugs. The landlord, Freud, came to our defence by explaining that 'the Professor is suffering from a sub-conscious basis of neurosis consisting of a malicious aggression which makes him hit table-tennis balls furiously in order to terrorise the other tenants.'

Our Club grew in both quantity and quality. There were 370 players entered in my 'Bible,' from the aver-

age good English player to Internationals. Among the 'élite' to whom I am grateful for their participation with us 'mortals' I remember Dennis Miller, Ivor Jones, Bobby Stevens, John Miller, Denis Littlewort, Alan Miller, Alan Rhodes, Brian Wright, Laurie Landry, Yvonne Baker, Mary Stafford, Lynn Withams, Mickey Jones, the Indian champion Jayant, as well as players from India, China, and Mauritius. I would also like to mention many players well known in the musical profession, but it would be impossible to enumerate them here.

We closed on May 25 with a final tournament, the winner of a special cup being Denis Littlewort. From a devoted group of players I received a wonderful and deeply touching gift of a gold watch, which will always remind me of the exciting and hard-fought battles in our 'Peace' Club. For me table-tennis is the elixir of youth, keeping the reflexes young and the living energy moving.

It offers the ideal method of escape, if only for a little while, from crooked reality. Oh! what a wonderful game!

ALEC BROOK OFFERS FOR TABLE TENNIS 1964-65

SHIRTS

Finest range of T.T. shirts. Adopted by many Leagues, Associations, and used exclusively by a Continental International team . . . **THE STAG SHIRT**—colours: Navy, Royal, Black, Beige, Tan, Red, Olive, and Dark Green. For other sports, White, Lemon, and Shy. Price: 16s. 6d. each; one dozen or more 15s. 6d.

TABLES

The **A.D.B. Tournament Table**. No table can compare. Used in international and county games, **£37 19s. 6d.**

Villa Spalding, £44 17s. 6d.

Jaques Tournament, £47 10s. 0d.

½ inch club match, £26 10s. 0d.

All tables carriage paid. Part-exchange.

BATS

Cor du Buy range 34s. 6d. each. **Stiga** range 35s. 6d. each. **Barnes and Harrison** 25s. 6d.

Japanese rubber (rev. or normal) 7s. 6d. per piece.

T.T. hold-alls 25s. 6d. **Bat-covers** 7s.

All plus postage.

ALEC BROOK

(SPORTS EQUIPMENT)
LTD.

124 EUSTON ROAD,
LONDON, N.W.1.
EUSTON 3772/3/4

JACK CARRINGTON'S NOTEBOOK

BLACKPOOL came through as winners of the E.T.T.A. Best-Trained Youth Group Competition for 1964. The competition is to be repeated this season and is open to all Leagues or L.E.A.'s. Entries can be made on the form printed below.

Groups consisting of 12 pupils under 16 on 1st July 1964 (at least four being girls), may be entered by a League of L.E.A. Two or more coaches must be nominated, one being the responsible organiser.

Entries close on 20th December 1964, the fee being 15s. per team.

Teams will be tested in the performance of a number of useful coaching drills and skills (which will be listed in advance).

The winning organisation will receive a Tournament Table, with individual trophies for each team member.

Nine of the 12 pupils (of whom at least three must be girls) must appear at the actual competition sessions. These will be zoned but some travel is inevitable.

Special Note to Midland and Northern Counties and Leagues:

We would like to give priority to strong young players from the North and North Midlands on the following special week-end coaching courses:

October 23 - 25 at Skegness (Y.M.C.A. Centre).

October 31—November 1 at Matlock (Lea Green Sports Centre).

These are excellent opportunities to follow up our latest training systems for young talent, but usually, our own enthusiasts are so late in applying that we are driven to fill up the vacancies with non-E.T.T.A. members

COACHING DIARY

October			
2, 3, 4	York	J. Rowntree School	Mass Rally
5, 6	Wakefield	Various	Coaches and Teachers
7, 8	Yorkshire		
9	Newcastle	Longbenton	N.A.Y.C. Session
10, 11	Newcastle	Guidepost School	Mass Rally
12	Fruithoe	Hetton	Selected Youth
13	Sunderland	Millom School	L.E.A. Session
14	Cumberland		School Rally and Coaches Assessment
15	N. Lanes. Area		
16	Gateshead	Heathfield Sports Hall	L.E.A. Sessions
17, 18	Sunderland	Bede School	Mass Rally
21	Chatham		Afternoon Schools' Session
23, 24, 25	Skegness	Y.M.C.A. Centre	Evening, Coaches
25, 26	Crystal Palace		C.C.P.R. Course
28	Chatham		Teachers' Course
31-Nov. 1	Matlock	Lea Green	As 21st October
			Advanced Y.P.
November			
4	Chatham		As 21st October
7	Bristol		Mass Rally
8	Glouc.	Stroud	Mass Rally
13	Clacton	St. Osyth Col.	Teachers
14, 15	Newmarket		L.E.A. Rally
21/22	Dorset		Rally
28, 29, 30	Lilleshall		C.C.P.R. P.E. Teachers
December			
1-10	Midlands	Various	C.C.P.R. Arrangements
5	London	E.T.T.A. Council	
11, 12	Bury S.E.	Foeffment School	L.E.A. Rally
17-21	South Lanes.	Various	Coaches' Meetings and Assessment
28-31	Bisham		C.C.P.R. General Course
January			
5	Crystal Palace		Daytime Schools' Session

and casual players. Then once again we hear the question at the annual general meeting: "When do we provide anything for our young champions to develop them?"

May we ask all readers to draw this note to the attention of organisers and parents who have youngsters who might benefit from such high-pressure week-end training?

Details can be obtained from Director of Coaching, 24 Worcester Gardens, Ilford, Essex.

TORCH TROPHY AWARD

MRS. Jeannie Fowler Reay, the table tennis mother to so many young players in the North East, was one of the nine persons throughout Great Britain to receive one of the coveted Torch Trophy Trust Awards for their outstanding examples of voluntary work in the realm of sport over many years.

Mrs. Reay, wife of Edgar Reay, that well known Sunderland official, has devoted some 38 of her 60 years to the cause of sport, from organiser of refreshments to money raiser, coach, organiser and tutor and guide for the young in administrative work. She was also appeals organiser in raising £4,000 to supply new equipment and clubhouse.

The Sunderland club can be well proud of this tireless worker who is a shining example of the Trust, which was inaugurated to encourage voluntary workers into all phases of sport so that facilities as they become available are not wasted.

ENTRY FORM

Form to be returned to **Director of Coaching,**
24, Worcester Gardens, Ilford, Essex.

We wish to enter a team/We would like further details of the "B.T.Y.G." Competition. (Delete as appropriate).

Organisation (League or L.E.A.)

Organising Coach:.....

Address:

MICHAEL MACLAREN GOES TO IRELAND FOR HIS GLAMOUR GIRL

HAZEL MALCOLM

The first of this season's young ladies for the Glamour Spot is 16 years old HAZEL MALCOLM from Dublin.

A very shy, petite girl with a great big smile, Hazel has been playing table tennis for three years at the Drumcondra Club; indulged in netball, hockey, rounders, swimming, cycling, badminton, gymnastics, travel and cricket (yes, cricket!)

She is an avid reader of Perry Mason and James Bond, but told me she does not like eating. I never quite got to the bottom of this statement, accepting it as a bit of "Irish."

Hazel is already quite a good player and is keen to improve her game. At the recent Butlin's Irish Tournament she could be seen practicing on the first available table and when there were none she would settle down to study the top players intently.

She plans to become a gymnast teacher when she finishes school.



TABLE TENNIS HELPED says CHUCK McKINLEY

CHUCK McKINLEY, the former Wimbledon champion, claims that table tennis played a big part in helping him become the world's No. 1 lawn tennis player.

Analysing his speed around the court and his immense fighting spirit, McKinley in an interview with BRITISH LAWN TENNIS, the leading magazine of that game, said:

"I have always played a lot of table tennis and that has developed my ability to get off the mark. Table tennis is a terrific game for the reflexes and being quick about the table. This has helped me to be quick off the mark playing lawn tennis."

SUSSEX OPEN

THE Sussex Open, one of the most popular of the earlier season tournaments, takes place at the White Rock Pavilion, Hastings, on October 24-25. Entries close on October 10 to D. N. Tyler, Prudential Chambers, 1, Yorks Buildings, Hastings, Sussex.

JUNIORS JOIN THE INTERNATIONAL CLUB

THE drive by Laurie Landry at the close of the season to bring junior internationals into the International Club was most successful (writes Geoff Harrower). Already 21 juniors have enrolled, joining the 57 senior members.

Membership, of course, is open to official international players, and Associate Membership to those who have represented England in a Junior international.

During May elections were held for places on the Executive Committee. All Officers were returned unopposed, and they are: Chairman, AUBREY SIMONS; Hon. General Secretary, GEOFF HARROWER; Hon Treasurer, BRIAN WRIGHT and Hon. Social Secretary KEITH HURLOCK.

The voting for the Executive was very keen, no less than 70 per cent. of the membership taking part, an astonishing number for a postal ballot. The successful candidates were:—RON CRAYDEN, 25 votes; LAURIE LANDRY, also 25; LEN ADAMS, 21; MICHAEL THORNHILL, 18; MARGARET FRY and LES COHEN, both 16.

The other four candidates also polled well, Tony Pidcock securing 14 votes, Tommy Sears 13, Jack Carlington 12 and Edgar Reay 9. It seems obvious that all ten candidates enjoyed a wide measure of support, and, indeed, unlike politics, all were inspired by only one aim, to further table tennis.

M.P.S. INVITE

The Club may soon be able to take concrete steps towards assisting the furtherance of International Table Tennis, for the Master Points Scheme Committee are inviting the co-operation of The Club, both in distribution of Master Points at Tournaments and other events, and also in the compilation of league and other records.

It is felt that there are many ex-international players who will be prepared to put in some work at home, particularly when it is realised that no less than £285 was handed over at the E.T.T.A. Annual General Meeting. This sum is to be used by the Senior Selection Committee to further England's aim to get back to the top of the European ladder.

For the coming season, a target of £500 nett profit is the aim, and members of The International Club can play a valuable part in raising this sum. Any interested members are asked to write to me at 11, Lyneham Road, Luton, Beds. (Luton 32313) for details. The Executive Committee of The Club will shortly be considering this matter.

Fostering Table Tennis

GUNNERSBURY Triangle Lawn Tennis Club have become table tennis minded—all due to a little persuasion from Peter Lowen, the E.T.T.A. secretary, who is a member.

"The place was almost dead during the winter and I persuaded them to start table tennis. The gratifying result was 35 members for the first night!"

Gunnersbury now moves into the promotion side by staging the Bernard Crouch match between Middlesex and Surrey on October 6.

Lowen is hoping to boost a junior section at Gunnersbury on the same lines as is done for lawn tennis.

T.T. players who are members of lawn tennis clubs, paying little or no attention to table tennis should follow Lowen's example.

ALAN LINDSAY

(England and Middlesex)

COACHES THE STARS
EXHIBITIONS A SPECIALITY
All enquiries

33, CRESWICK ROAD,
ACTON, W.3
Tel. ACOm 2812

BUTLIN'S IRISH OPEN**SCHOLER'S EASY WIN**

by MICHAEL MACLAREN

THE second annual Butlin's Tournament at Mosney Camp, near Dublin, on September 5-6 attracted 199 entries, an increase of more than fifty per cent. over last year.

The tremendous success of the Championships, the largest ever held in Ireland, was mostly due to the very fine work of Johnny Leach, who not only had the original idea but organised the meeting with the able help of the many officers of the Irish T.T. Association. Messrs. Butlin's should also be congratulated for providing the ideal social background for such an event.

Men's Singles

Eberhard Scholer, of West Germany, came out an easy winner with a two-straight win over Bobby Stevens, of Essex, in the final. Brian Wright was the only player to really extend Scholer and the scores—21-17, 17-21, 21-17 were as close as they suggest.

Ireland's talented youngster Jimmy Langan notched the first game from the German but could amass no more than 13 in each of the next two games against a perplexing mixture of chop interspersed with lightning-quick bursts of short forehand driving.

An out-of-form (or rather not-yet-in-form) Ian Harrison fell to Stevens in two-straight games, having previously accounted for Joe Somogyi 21-12, 17-21, 21-9. Other interesting results were Wright's easy win over Derek Wall 21-8, 21-14 and Stevens' quick-fire quarter-final with Tommy Caffrey, winning 21-15, 21-18.

The quiet, likeable "Ebby" Scholer impressed everyone with his ability to play really well when necessary as though building up his mental and physical energies for the important World Series later in the season.

Women's Singles

Mary Shannon won this event with a brilliant display in the final against Diane Rowe, who played as though completely out of touch. Mary plays at her best when she is allowed to dictate the course of play—last season's results show this—so I hope her practice this summer has been "under pressure" to enable her to

overcome the more aggressive players.

None of the Irish lady players were able to extend the English girls and indeed many of them curiously withdrew rather than play against the seeded players. At one point Mary Shannon had five walk-overs in 11 matches.

Jean McCree was the only player to take a game from Mary, who had to play carefully to ensure a winning margin in the third.

Women's Doubles

Mary and Di resumed their world beating pairing to win this event with a minimum of trouble. Their strongest opposition came from Jean McCree and Mrs. E. Reid (Ireland's No. 1) in the final.

Men's Doubles

Brian Wright and Bobby Stevens teamed up to defeat the experienced pairing of Scholer and Leach in two close games in the final, after dealing with the Irish No. 1 pair, Tommy Caffrey and Jimmy Langan, in the semi-final.

In the other semi Scholer/Leach defeated Harrison and Maclaren by two games to one. Joe Somogyi and Derek Wall were unfortunately placed in the draw, losing to Wright/Stevens in an early round.

Mixed Doubles

With the very large ladies' entry there were as many as 83 pairs in the Mixed event, more than twice the entry for last season's English Open. Mary Shannon achieved a hat-trick of victories when she teamed up with her regular partner (on and off the table) Brian Wright to overcome Ebby Scholer and Di Rowe in two close games, having had a hard game against the Essex pair Stevens/McCree in the semi.

I would like to draw attention to the excellent way in which Johnny Leach conducted the organisation. Each entrant had a playing schedule from which he could see exactly where and when he was required to

RESULTS

Men's Singles: Semi-Finals: R. STEVENS (Essex) bt I. Harrison (Glouc.) 21-14, 21-12. E. SCHOLER (Germany) bt B. Wright (Middx.), 21-17, 17-21, 21-17.

Final: SCHOLER bt R. Stevens 21-16, 21-18.

Women's Singles: Semi-Finals: M. SHANNON (Surrey) bt J. McCree (Essex) 21-15, 18-21, 21-14. D. ROWE (Middx.) bt E. Reid (Ireland) 21-7, 21-14.

Final: SHANNON bt Rowe 21-10, 21-13.

Men's Doubles: Semi-Finals: E. SCHOLER/J. A. LEACH (Essex) bt Harrison/M. Maclaren (Surrey) 19-21, 21-8, 21-12. WRIGHT/STEVENS bt T. Caffrey/J. Langan (Ireland) 21-15, 21-13.

Final: WRIGHT/STEVENS bt Scholer/Leach 21-13, 21-19.

Women's Doubles: Semi-Finals: REID/McCREE bt F. Dawkins/B. Harris 21-10, 21-10. ROWE/SHANNON bt Mrs. Buick/Mrs. Mahony 21-4, 21-6.

Final: ROWE/SHANNON bt E. Reid/McCree 21-12, 21-10.

Mixed Doubles: Semi-Finals: SCHOLER/Miss ROWE bt J. Somogyi (Surrey), Mrs. Mahony 21-14, 23-21. B. WRIGHT/Miss SHANNON bt B. Stevens/Mrs. McCree 21-15, 17-21, 21-14.

Final: WRIGHT/SHANNON bt Scholer/Rowe 21-16, 21-18.

play, with the result that little delay was encountered.

Players were asked to umpire upon losing but not pressed or told to do so as in many English tournaments. A floating pool of six to eight official umpires were at hand to step in and score where needed.

Events ran so well that at one point competitors were asked if they would mind playing earlier than indicated on their schedules and, with nearly 400 matches actually played, the finals were completed during the middle of the afternoon of the second day's play.

Players were treated with a respect that is unknown in many English tournaments where on too many occasions competitors are at the mercy of inefficient planning.

Leach's only comment on this was: "Well, as a player, I know what players want."

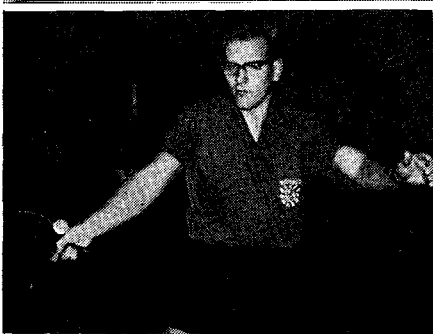
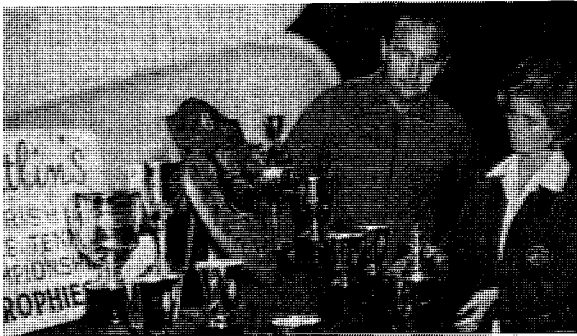
There was also an unusual points scheme for Irish players whereby a fine shield was awarded to the club whose players had the best results. This was won for the second time by the Crofton Club of Dublin. The trophies were presented to the finalists by world snooker champion, John Pulman.

CLUB BADGES

- Attractive Cloth Badges, made to your own design, in any quantity.
- Suitable for Blazers, Sweaters, etc.
- LOW PRICES AND QUICK DELIVERY.
- Free help offered in designing your badge.

Please write to:

S. A. CORY & COMPANY,
20 ST. JOHN'S HILL, LONDON, SW11



DUBLIN'S IRISH PHOTO COVERAGE—Top: DIANE ROWE in unfamiliar costume; EBERHARD SCHOLER, singles winner; BOBBY STEVENS and BRIAN WRIGHT receive men's doubles trophy from John Pulman, the world snooker champion. Second row: JIM LANGAN, Ireland's young hope; MARY SHANNON scoops the pool; Third row: JOHNNY LEACH and Redcoat Hostess, Angela, inspect the trophies; WRIGHT, DEREK WALL, IAN HARRISON and STEVENS. Bottom row: SCHOLER in action; SCHOLER tries his hand at snooker; MARY SHANNON and DIANE ROWE doubles winners.

Pictures by Michael Maclaren and Bullin's.

EAST OF ENGLAND OPEN

by GEOFF HARROWER

Barnes and Harrison Scratched from Double

THE table tennis season got off to an incident-packed start at the East of England Open at Butlin's, Skegness, on September 12-13.

A record entry of over 200 in the men's singles posed problems for the organisers. This left little time for empty tables, and, as always, the problem of running a tournament at a huge holiday camp is more acute than in an ordinary hall.

RESULTS

Men's Singles: Semi-Finals: G. C. BARNES (Essex) bt B. D. WRIGHT (Mid dx.) 22-20, 17-21, 24-22. M. SYMONDS (Lancs.) bt R. Morley (Glouc.) 21-16, 17-21, 21-16.

Final: BARNES bt Symonds 21-19, 21-17.

Women's Singles: Semi-Finals: I. OGUS (Mid dx.) bt Mrs. P. Clark (Northumberland) 21-13, 17-21, 21-12. L. PROUDLOCK (Yorks.) bt J. Canham (Herts.) 21-14, 17-21, 26-24.

Final: OGUS b Proudlock 21-17, 21-7.

Men's Doubles: Semi-Finals: R. GUNNION (Warwicks.) / C. WARREN (Surrey) bt H. Bulst / A. R. Pidcock (Kent) 18-21, 21-15, 21-16. WRIGHT / L. HASLAM (Mid dx.) bt D. Jones (Bucks.) / S. Jacobson (Mid dx.) 21-11, 21-15.

Final: GUNNION/WARREN bt Wrgnt/Haslam 21-16, 21-16.

Women's Doubles: Semi-Finals: Mrs. E. CARRINGTON (Essex) / CANHAM bt C. Blackshaw/L. Proudlock (Yorks.) 21-13, 21-14. M. LEIGH/C. MOORE (Lancs.) bt J. Dalton/J. Wooding (Bucks.) 16-21, 21-16, 21-15.

Final: CANHAM/CARRINGTON bt Leigh/Moore 16-21, 21-17, 21-10.

Mixed Doubles: Semi-Finals: P. DUNCOMBE/Miss C. BLACKSHAW (Yorks.) bt Warren/Miss G. Sayer (Essex) 21-18, 17-21, 21-16. B. HILL (Lincs.) / Mrs. CARRINGTON bt Morley/Miss Ogus 21-12, 21-16.

Final: DUNCOMBE / BLACKSHAW bt Hill/Carrington 21-12, 21-18.

Boys' Singles: Semi-Finals: M. JOHNS (Cheshire) bt S. Gibbs (Essex) 21-12, 14-21, 21-16. D. BROWN (Essex) bt G. Salter (Surrey) 17-21, 21-9, 21-17.

Final: BROWN bt Johns 21-19, 21-18.

Girls' Singles: Semi-Finals: L. HENWOOD (Essex) bt J. Dalton (Bucks.) 21-16, 21-16. P. HEMMINGS (Herts.) bt M. Hoppell (Northumberland) 16-21, 21-19, 21-8.

Final: HEMMINGS bt Henwood 21-12, 21-18.

Hot weather inevitably creates demands for cold drinks, and at Skegness there was a considerable distance to go from the playing hall to obtain this necessary nectar. Inevitably many matches were called and temporarily taken off because one or more players were out of the hall.

Very late on Saturday night the time came when an announcement was made that any players not reporting to play within three minutes of being called would be scratched. There will be no prize for guessing the first victims—yes, got it in one, **Chester Barnes and Ian Harrison**, scratched from the quarter-finals of the men's doubles.

All so easy to see both points of view: The organisers just could not get through, and had to be tough; Barnes and Harrison, out of the hall when the decision to scratch if not ready was taken, came back to find themselves "out."

Background to all this was the decision of Barnes and Harrison, together with Peter Madge, to eat their evening meal in the town, and not in the camp. They obtained half an hour's extension, and took rather more than an hour. All very unfortunate, but the consensus of neutral opinion was that such experienced tournament campaigners should have got permission before leaving the hall, especially when the later rounds inevitably meant that if players were absent the tournament was held up because alternative matches could not be found, as was the case earlier in the day.

Another little incident was resolved amicably. One tournament official requested Madge to fetch two trophies won last season by **Chester Barnes**. Whilst he was attending to this, another official scratched him from the men's singles! Of course, when it was realised why he was absent, he was reinstated—but it would have to be Peter Madge!

MOMENT OF GLORY

What about the tournament itself? Not terribly inspiring play, except perhaps a stirring men's singles semi-final between Mike Symonds and Roy Morley. Mike just got the verdict, but Roy had his moment of glory

earlier, by ousting Ian Harrison in the quarters, 18, —14, 15.

Chester Barnes retained his title, proving just too good for Brian Wright in the semi and Symonds in the final.

There was, however, another unfortunate incident between Barnes and Wright. Brian had got off to a more than useful 11-3 lead, with Chester gradually pulling it back. Then, just as Wright was about to serve Barnes stepped back—not ready, but he had already come forward as though to receive. Wright looked very annoyed, but he was livid a few moments later.

The umpire called 18-17 in Wright's favour, he won the next point, hears the score called 19-17, only for Barnes to claim it was 18-all. After lots of confusing advice from well-meaning spectators, the umpire altered the score to 18-all.

WRONG POINT

What really happened? It started at 16-all, when the umpire gave a point, wrongly, to Wright, and the score was called, with Barnes serving, 16-17, then 16-18, and then, at the change of service, 18-17, instead of 17-16, 17-all, 17-18. With the two semi-finals going on simultaneously, very few people could hear the score called, but I was fortunately placed directly facing the umpire. All very unfortunate, especially for Brian Wright, who, until this second incident had been playing well—certainly well enough to win the first game.

Early round men's singles results of note: Stuart Gibbs beat Connie Warren 21, —13, 15; then lost to Schofield 18, —10, 15; Harrison beat Ralph Gunnion 20, 18; Stan Jacobson beat Brian Hill in three before going down to Harrison; Les Haslam took a game from Symonds, but lost the decider to 9. In the quarters, Morley beat Harrison, as already reported, Barnes beat Tony Pidcock 19, 17, Wright accounted for Schofield —11, 16, 18, whilst Symonds got the better of David Lowe 12, 13.

The women's singles was hardly inspiring, with Irene Ogus taking the title after a shaky start against Lesley Proudlock. Reigning champion Lesley Bell did not compete. In an early round Irene had considerable difficulty in accounting for Elsie Carrington.

Pauline Hemmings, a clear winner of the girls' singles, also did well in the senior event with a victory over Cynthia Blackshaw 17, —18, 18, before going down to Philomena Clark

HARRY VENNER

(England & Surrey)

Coach to the Champions:
Mary Shannon, Chester Barnes.
Individual Club and Class Coaching.

All enquiries:

14, CRANHAM ROAD,
HORNCHURCH, ESSEX.
HORNCHURCH 46344.

in the quarters —19, 19, 13. In the tightest match of the event, Leslev Proudlock topped top seed Jackie Canham 26-24 in the decider of their semi-final scrap.

In the heat I seem to have missed any outstanding battles in the doubles, but it was interesting to note that Elsie Carrington was the only senior finalist to appear in more than one event. It must be a long time since a tournament with an above average entry had fifteen differen. senior finalists out of a possible sixteen— and nineteen out of twenty in all.

David Brown had a first class win in the boys' singles. It was said he was lucky to get easily to the final, Alan Hydes having scratched, but he confounded his critics by outthitting Mike Johns in the final after Johns had beaten top seed Stuart Gibbs in the semis.

Peter Madge

Comments

I CANNOT say much about this affair since it is the subject of an official protest to the E.T.T.A. by the players concerned.

In brief the facts are: Barnes and Harrison had played three successive rounds of the doubles without a break. It was getting on for midnight. There were no refreshments in the hall so they went to the camp coffee bar, about 110 yards away from the hall. They returned within ten minutes to find they had been scratched from the quarter final against Wright and Haslam.

After strong protest by myself and the players the organisers offered to repeal the scratching if Wright and partner would agree. Wright refused and claimed the match.

The action of Wright does not figure in the protest to the E.T.T.A. since he was entitled to refuse to play. The protest is against the manner and circumstances in which the scratching took place.

BARNES FREE

FOLLOWING the report of an appeals committee the National Executive have lifted the ban on Chester Barnes for international play.

Barnes was subsequently picked for England's European Championships team and for the match against Sweden on October 3, and the Netherlands Open at Utreoht on October 17-18.

Barnes has given the Association assurances that he is willing to co-operate with the Association in his own and the Association's interest.

AROUND EAST ANGLIA

Little Change in Norfolk

NORFOLK, fit for a fresh season, carry straight on from where we left them in our May notes.

Marion Harrison has been succeeded as hon. secretary of the **E. Anglian League** by her husband, Gordon, whom we congratulate upon joining Maurice Ewles and Doug Clutton as another fully-qualified E.T.T.A. Coach.

Marion tells me that David Dunn, Norwich League's co-ordinating official, sports reporter for Eastern Counties Newspapers, including Norwich City's soccer matches, and a member of Yare Rowing Club, will shortly be leaving this part of the world, to seek fortune in new company, with his wife and children. We thank David for many seasons of unassuming endeavour.

The **E. Anglian League Trophy** for 1963-64 will be awarded to either Great Yarmouth or Ipswich. A play-off will decide which.

The **Norfolk County annual general meeting** saw most officers re-elected, but Gordon Harrison came in as umpires' secretary. A. Rawlings, Dereham's hon.

secretary, became a vice-president.

The new Norfolk junior badge was approved and a sample has since been made for us by Jarvis of Norwich, who recently supplied Great Yarmouth with their new badges.

North Walsham are affiliated now, and will play in the East Anglian League, Division II, this season.

Lapel badges for the county are under consideration. These would be worn by any league player under our jurisdiction who cares to buy one. They may, for technical reasons, differ slightly from the new county junior badge. Will league secretaries please estimate demand?

A further small trophy for a competition to be decided has been donated anonymously to E. Anglians. This supplements the "Ted Littleboy" trophy, which Ted presented at the close of last season.

Dereham League started play during the week ending September 4. All games are usually played on Friday nights (General Rule 10) but Civil Service home games will be on Thursdays.

Mrs. E. L. Flooring is again president, D. G. Craske chairman, P. Fearn secretary, and (collecting half-season match fees) A. Rawlings, the treasurer. To keep an eye on the "kitty," we have Mr. W. Groom, for a further spell of office. Dereham will again play in Division II of the E. Anglian League.

Notice of the K.O. tournaments will be sent to all clubs during the playing season. Thank you, Mr. Rawlings, for being the first to send me a league handbook!

There have been various Youth and Club tournaments since I wrote in May. Micky Rooney won one in Norwich. And I hear that Neville Graver has been facing top-class opposition in Germany. Norfolk players are eagerly scanning the list of Open tournaments for the coming season, but the East Anglian Open will need a hall big enough to hold it and a band of helpers willing to serve. It will also need trophies and cups before it can get under way. In the meantime, the Cambridge Open is perhaps East Anglia's best.

J. S. Penny.

NEW CAMBS. PLAN

FRESH in the minds of players and officials is the success of the Cambridgeshire Open, which now becomes a regular part of the tournament calendar and has been earmarked for April 4.

County secretary Margaret Cornwell was responsible for much of the success.

One black mark was the failure of many players of repute to lend a hand with umpiring after losing their games. The time must surely come when it is a condition of entry that the losing player must umpire the following game.

The Cambridgeshire Summer League was again most popular, being played off in three divisions, with the winners of each meeting for the title, which eventually went to Y.M.C.A.

A new set-up for League and County areas was discussed at the Cambridgeshire annual general meeting and its operation will depend upon people who are willing to come forward and act as officials for the new "League Body." This will show the keenness of Cambridgeshire people when the new "body" is proposed at a special meeting.

Cambridgeshire have again entered the National County championships, while Cambridge City have entered three sides in the South East Midlands League.

Players to watch this season will be Keith Chapman, Alan Ponder and Paul Chisnall, while Valerie Gillan will again be the leading lady.

Ron Nunn, switching to his summer sport, kept wicket for Cambridgeshire in helping them finish third in the Minor Counties championship.

The Cambridgeshire League has attracted an entry of 78 and will operate seven divisions.

Leslie Constable.

Tel. ACO 3886

R. T. BROWN

(G. K. ALLINSON)

5 Star Service

To Players by Players

- * All T.T. Bats Inc. Stiga.
- * All Equipment, Clothing and Footwear.
- * Everything in Sport.
- * Special Terms to Clubs.
- * Prompt Service.

312, UXBRIDGE ROAD,
ACTON, LONDON, W.3.

Editor's Postbag

A WASTED SUMMER

IT is an established fact that the popularity of any sport depends to a very great extent on the performances of its top players. All will agree that table tennis in this country is hardly at present in a position where it can sit back and rest on its laurels. It follows that those responsible (ultimately the National Executive Committee) should have been doing all they could for the top players especially during the summer months; a time when many other winter sports are holding top players courses, training sessions, or at the very least seeing that the top players get regular top quality practice. Conferences are held between captains, coaches and players, where tactics are worked out and tried out. Experiences are exchanged and advice passed on. Ways are worked out of dealing with certain players and styles. Films are taken and faults ironed out. Little by little the players are prepared in mind particularly, as well as in body for the season ahead.

I am referring to the top players, those to whom the country will look for results. If those results are not forthcoming—and they have not been, especially from the men in recent years—public interest will certainly not be turned towards table tennis again.

I have endeavoured to show what should have been done and why. Now let us see exactly what has been done. In the spring the top men and women received a list of elementary physical exercises.

It is hardly credible but that is all that has been done for six months. It is even a fact that some of the top players have sometimes experienced difficulty finding somewhere to play. If the situation were not so serious it would be laughable.

Let the National Executive Committee tell us why the top players have not been brought together once for a training session. Why has virtually nothing been done for six months to give our players some help and encouragement for the season ahead.

Can it be that they felt that nothing need be done? Nonsense. Have the N.E.C. not the organising ability for such things? Surely they would not have their jobs if this were the case. Money? These activities would not have cost very much, especially when measured by the benefit which might have been derived.

Nothing has been done. I blame the N.E.C. because although there may be others whose job it is to organise such activities, theirs is the ultimate responsibility.

The summer has passed completely wasted, but even now it is not too late. Many of the big tournaments are not until later in the season. Let the N.E.C. make up for their "top player" inactivity for all these months by getting things moving now.

If the money is not available, then pending action on the 1963 Table Tennis Commission's Report, let us have a special appeal direct through this magazine, and give the E.T.T.A. funds an injection.

It is about time the National Executive Committee woke up to the fact that World Championships are not won by sitting about doing nothing.

K. MATHEWS,
Croydon.

Teaching Theory Certificate

ON page 108 of the 1962-1963 E.T.T.A. Handbook there appear the following words, presumably written by the Director of Coaching and approved by the Coaching Committee:—

"The E.T.T.A. Teaching Theory Certificate is an award which requires the same standards as the Diploma, with the exception of current playing ability . . ."

Judging by the number of people who are awarded the Teaching Theory Certificate and afterwards **"promoted"** to the Diploma, the Coaching Committee are not using the Certificate for its proper purpose, but are debasing it to a **"Second Class Diploma."** I say this because, from the statement in paragraph 1, the only reason for a person already holding the Certificate being awarded the Diploma would be that he had im-

proved his **"current playing ability."** A glance at some of the names who have first held a Certificate before being awarded the Diploma, shows that this is not the case in fact.

Let the Coaching Committee be honest; if they want an award for the person who is not quite good enough at **coaching** to be awarded the Diploma, then let them have a Second Class standard, instead of falsifying the award of the Teaching Theory Certificate.

A. J. H. WICKENS
(Slough).

R.A.F. (U.K.) v. Malta

WITH reference to the photo coverage by the R.A.F., which appeared on page twelve of the May issue of Table Tennis, I would like to point out that the R.A.F. side played **twice** against the Malta national team. In the first match the Malta side beat the R.A.F. 7-3 and following were the results:—

Balbi bt Richards 16, -9, 19; lost to Clayton -12, 10, -20; Cachia lost to Clayton -17, -12; bt McMurragh -21, 14, 13; Buhagiar bt Shorrick 13, 16; lost to Richards -17, -21; Pellegrini bt Mawson 21, 22; bt Shorrick 12, 15; Sciberras bt McMurragh 12, 17; bt Mawson -15, 19, 22.

Seeing that the standard of the visiting team was below that of the national side, the selectors decided to replace three of the five men who defeated the R.A.F. side by others of a lesser standard. In fact, two of the newcomers, namely Fero and Bencini, had never played in the first team before. The third one, Curran, although representing Malta on previous occasions, never reached his top form last season and was dropped from the national side. Therefore, in the Malta team which lost to R.A.F. 3-7 in the return match, there were only two players who have so far retained a place in the national team.

EDWIN C. DEBONO,
Hon. Sec. Malta T.T.A.



Members of the Gloucester League team bring out the champagne to celebrate winning the Wilmott Cup national team championship.

ASIANS ARE MORE CONSCIENTIOUS

By TIMOR HAMORI

ELEMER GYETVAI has been missing from Hungarian table tennis for a long time and the reason is that the former member of Hungary's world and European championship teams has been coaching in Indonesia.

He is now back in Hungary and I took the opportunity of finding from him some first hand knowledge of his experiences.

My first question was to ask which were the most popular sports in Indonesia and he gave me Basketball, Badminton, and Table Tennis, in that order. Naturally my prime interest was in the standard of table tennis.

"The average level of the women players is very good," said Gyetvai, "but they have no one particularly outstanding. The play of the men is the same as that of the Hungarians and their champion, Johnny Lim Hok Liang, is a player of whom we should hear quite a lot in the future."

In reply to my question about tactics and type of play he said:

"Everyone in Indonesia used to play penholder, but four years ago

they experimented with the European grip and now this is the most popular. In fact only ten per cent. of players now use pen holder.

"The game is introduced at a very young age and already in training and receiving tactical lessons are youngsters of 7 and 8"

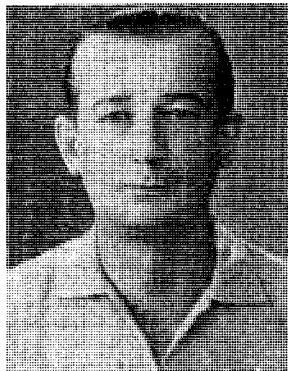
Hungary, concerned over the loss of their once proud position as the top table tennis nation in Europe and the world, have appointed **ELEMER GYETVAI** as new national inspector.

He has a five year plan, broken down into three phases:

1. Prepare by up-to-date practice methods a team to obtain several of the top placings in the European championships and achieve good results in the World Championships.
2. To regain European superiority by 1967.
3. To bring the Hungarian level of the top Far East countries by 1969.

Gyetvai, winner of the English Open singles in 1955-56, returned to Hungary last season after a two years coaching engagement in Indonesia.

On his return and before his appointment as international inspector Gyetvai was interviewed by Timor Hamori.



ELEMER GYETVAI

From the experiences of Indonesia the conversation turned to the European standard and I asked the three-times Hungarian singles champion if he could see the reason for our backwardness.

He said: "Eleven years ago we won 8-1 against the Chinese top team and where do we stand now? It isn't true that the Asiatic players are fitter for this sport. They are more conscientious and diligent. I find our backwardness is due to the difference between the training methods."

Questioned about his own plans for the future, Gyetvai said he would like to work for the progress of Hungarian table tennis. This is a wish that has now come true for he has been appointed National Inspector of Hungarian table tennis. His job will be to study the activities in the clubs of Budapest and the country as a whole, then to work out a common programme with the coaches aiming at lifting the general standard and closing the wide gaps between the European and the Asiatics.

TERRY DENSHAM MARRIED



Photograph by Michael Maclaren.

Many table tennis personalities attended the wedding of Hertfordshire's English International **TERRY DENSHAM** to Christine Curwin on the 8th of August in Welwyn Garden City (top left) Terry and Christine spent their honeymoon on the island of Iviza, of Spain, and are now settling down in their new home in Welwyn. Best man to

the wedding was Terry's close friend Martin Holmes.

In the picture on the right (L. to R.) are: Sandra Hodson, 'Smiler' Wilson, Janet and Tony Cornell, Mary Shannon, Mick Creamer, Peter Madge, Alma Taft, Alan Rhodes, Brian Wright, Ian Harrison, Eddie Hodson, Glynn Bebb and John Hunt (with friend).

Kent Table Tennis Booms

AFFILIATED membership in Kent has risen steadily in the past three years and this season has brought the biggest jump yet. Two leagues, Bromley and N.W. Kent have for the first time broken through the magic 100 team barrier.

The following six leagues show the biggest membership increases (last year's figures in brackets):

Bromley, 50 club (30), 108 teams (65); N.W. Kent, 40 clubs (38), 106 teams (94); Ashford, 32 clubs (25), 60 teams (49); Woolwich, 30 clubs (27), 65 teams (58); Sittingbourne, 26 clubs (23), 75 teams (71); Maidstone, 21 clubs (18), 64 teams (60).

Most of Kent's other 10 leagues are also on the upgrade, so last year's total of 14,772 affiliated members is certain to be exceeded, and the goal of 500 affiliated clubs and 1,000 teams is now well within reach.

Biggest development in Kent last sea-

MARATHONERS

EXMOUTH and District may not be one of the best known Leagues in Britain, but they are claiming World's longest playing champions.

At 09.01 hours on July 25, 1964, four members of the League, Maurice Southwell, Chris Sparks, David Bazell, and Brian Worts set out to play table tennis continuously for 35 hours. Their aim: to beat the British Marathon Record of 26hrs. 8mins. by the University College of Wales in 1961, and also claim a world record.

This was duly achieved at 20.03 hours on July 26, having played 11,287 points in 306 games.

Worts, 29 years old local Government officer, scored 95 wins with a total of 2,909½ points, followed by Sparks, 37 years old landscape gardener (86 and 2,887), Bazell, 29 years old reporter, (66 and 2,847) and Southwell, 25 years old Post Office worker (59 and 2,643½).

This endurance feat was twice featured on Westward Television and a high standard of play was maintained. Clothing was changed every four hours and feet were bathed regularly. Food consisted of boiled eggs, cheese, tomatoes, lettuce, biscuits, blackcurrant and orange squashes, while glucose and salt tablets were taken throughout.

At various times all players suffered fatigue, but fought it off by playing twice as hard. Feet were sore and one player's right hand was blistered, but no after effects were felt on the Monday morning.

A normal club game would have appeared tame after this!

son was the success of the drive to bring schools into affiliation. Over 50 schools affiliated to the County Association at the first time of asking, and 24,206 school-children were brought into "good standing."

A county-wide (zoned) school teams competition was highly successful, bringing ample reward for the great efforts put in by county secretary Frank Burvill and Jack Carrington's valuable liaison work. The County Association mean to double school affiliations and the competition entry this season.

KENT LEAGUE RECORD

The Kent League—Kent's inter-league competition—has also broken all records with an entry of 53 teams, grouped in seven divisions, entered by the 16 leagues. Kent League secretary Geoff Murray got a tightening up of rules accepted by the last annual general meeting and as a result the bugbear of postponed matches should disappear.

The top men's division bears a more open aspect than for many years, and will be contested by Beckenham (2 teams), Bromley, Canterbury, Folkestone, Gravesend, Medway Towns, N.W. Kent (2 teams), and Woolwich. Last season's relegation of Bromley "B" and Woolwich "B" means a wider representation in the first division than ever before.

N.W. Kent will be attempting the record feat of winning the top women's division for the tenth time in succession, but their hopes have received a 'set-back

because Joyce Ellis (née Fielder) will be out of action in the early part of the season. She is expecting her first child.

As Maidstone's Betty Bird is also expecting—her fourth!—Kent's two top ladies will be missing from the scene until late in 1964.

BASDEN TO THE FORE

To balance the temporary weakening in the ladies' field, the advent of 20-year-old Derek Basden has greatly strengthened Kent in the men's department. Basden, now ranked No. 2 in Kent, has already shown he can hold his own against opponents of premier standard. He looks certain of a Premier Division place along with Tony Piddock. Kent are lucky to have two experienced premier players, Henry Buist and Dennis Whittaker, to choose from for the No. 3 spot. Former Kent champion Joan Beadle has stepped into the breach by making a come-back to fill the vacancy left in the premier side. During the county training sessions in the summer she showed that she has lost none of her prowess.

COACHING ARRANGED

In conjunction with Jack Carrington, the Kent Education Committee, C.C.P.R. and local leagues, coaching has been arranged for schoolgirls in 13 separate sessions between September and November. These will be at Bromley, Chatham, Maidstone and Margate.

At one time junior events in Kent enjoyed a 50-50 support from boys and girls, but in recent years the boys have forged ahead. The coaching scheme is expected to restore the balance in due course.

BIGGEST ATTENDANCE

The annual general meeting and the first management committee meeting of the new season were the best attended meetings in the history of the Association. Treasurer Don Mitchell reported a £500 balance, but warned of expected loss this season because of rising costs.



EXMOUTH'S LONG PLAYERS

LANCS. and CHESHIRE

by GEORGE R. YATES

SYMONDS STAYS WITH LANCS.

CONTRARY to the surmise of friend Malcolm Hartley in the May issue of this magazine, the exciting possibility of Mike Symonds playing for Yorkshire this season is not to be despite his continued residence in Sheffield.

Granted the possibility was there and very much so but gladly from the Red Rose point of view Symonds has opted to continue his allegiance with Lancashire, the county of his birth.

Furthermore Symonds has signed the necessary form to again spearhead the Bolton S.S.S. inter-league team in the first division of the Lancashire and Cheshire League as well as in the Wilmott Cup competition.

Manchester's Kevin Forshaw, prevented by studies from county selection last season, has intimated his willingness to be considered once more and Lancashire's senior ranking list has been initially submitted as follows:—

Men: 1, M. SYMONDS; 2, J. INGBER; 3, K. FORSHAW; 4, R. CRUSHAM; 5, G. LIVESEY; 6, B. FARNWORTH; 7, J. KEOGH; 8, W. ANWAR.

Women: 1, D. FITZGERALD; 2, C. MOORE; 3, J. CRAFTY; 4, M. LEIGH.

Pending early trials in Bolton the junior registration and ranking has been left in abeyance although four serious contenders in Jack Frankland (Preston), John Clarke (Bolton), Terry Bickerdike (Whitefield) and David Potts (Blackpool) will be journeying to Leeds for the area international trial.

WIND OF CHANGE

At the annual general meeting of the combined Lancashire and Cheshire Associations in Manchester last June the wind of change reached gale proportions when directed at Lancashire officialdom.

It swept from office chairman Leslie W. Jones (Manchester), treasurer Tom G. Robinson (Oldham) and county match secretary Kay Benson (St. Annes), only Miss Benson being returned on to the general committee of four.

New chairman is Arthur E. Upton of Liverpool who will henceforth bring that breezy twang of Merseyside—so beloved of the late Billy Stamp—into full play.

George T. H. Fackrell, a yeoman backroom perfectionist from Warrington, takes over the financial reins whilst the writer will take on the onerous office of match secretary concurrently with that of press officer. In also endeavouring to serve the Bolton League in the joint capacity of general and match secretary my spare time will be devoted to lending Geoff Harrower a hand in furtherance of his Master Points Scheme of which I am an ardent devotee.

S. M. Renshaw, chairman of the Urmoston League, is the sole newcomer to the Lancashire executive, the one

vacancy in the Cheshire ranks, caused by John Kennerley's elevation to the peerage (match secretary) being filled by county player Derek Schofield of Stockport.

Thus are the administrative positions filled for the new season with Norman Cook again secretary of the joint bodies as only a man living in Cheshire (Stalybridge) and the secretary of a Lancashire League (Ashton-under-Lyne) could fill them. A unique situation calls for a unique personality and although "Cookie" would lay no claims to that personally, there are many who do.

FOUR UP

Twenty-seven member leagues of the Lancashire Association, together with seven from Cheshire, have combined to enter 83 teams—four in excess of last season—which have been allocated into nine divisions to form the Lancashire and Cheshire League this season.

All six men's divisions will have nine teams but the loss of two women's teams in Blackpool and Liverpool Business Houses reduces their strength to ten, playing in one division instead of the former two.

Five newcomers in Crewe, Hyde, Nelson, Warrington and Wigan brings the strength of the Youth Division up to a record ten teams.

Remaining static at nine teams the loss of Nelson and Warrington to the Youth section has been counter-balanced by the transference of Burnley from the



Lancashire County second teamer **CONNIE MOORE**, of Heywood and Manchester League, seen holding the women's singles trophy presented by the Duchess of Gloucester following the R.A.F. Association Championships in Eastbourne last Whitsun. Connie beat Mrs. Douglas of Aberdeen in the final.

Youth plus newcomers in Barrow-in-Furness to the Junior Division.

Newcomers to the men's first division will be Mid-Cheshire led by junior international Mike Johns, and Wirral. Departed from the top flight will be Liverpool Business Houses.

EVERLASTING TABLES

TABLES that never wear out. That could well be the claim of Capt. T. Buttar, of Glasgow, for the table tennis tables he has supplied to many municipalities over the past 30 years.

And the reason is that they are made of slate. As such they need almost no maintenance and are ideal for use in the open air such as recreation grounds and swimming pools, where the conventional wooden table would never stand up to the elements.

They are far more costly than the wooden table, with prices near the £60 mark, but once installed they would appear playable for ever.

Leatherhead, Surrey, have been using one of these tables for 28 years, while Brighton have had two for the past 25 years and these are now to be found at the Blackrock Swimming Pool.

Needless to say these have paid for themselves over and over again in hiring fees.

The tables are of terrific weight and are not easily manoeuvrable like the conventional wooden table which can easily be cleared away.

Capt. Buttar is at present conducting a campaign for the rules governing international matches to be changed so that they could be played on slate tables. As they exist at the moment, the rules for international matches are contradictory to those of the International Federation and also the E.T.T.A., which say: "The table can be of any material yielding a uniform bounce."

But for international matches the rules state: "The table should be of hard wood."

Table tennis is, of course, looked upon as an indoor game but the establishing of these slate tables in recreation grounds and swimming pools can do a great deal to encouraging people to play.

Incidentally playing in the open, where the wind moves the ball about, is good practice for keeping the eye on the ball.

COUNTY CHAMPIONSHIPS ROUND-UP

by JOHN WRIGHT

MORE THAN EVER

THE National County Championships have suffered two severe blows since the end of last season. First Margaret Fry, secretary since June, 1961 and re-elected unopposed for a fourth year, found herself unable for personal reasons to continue; then Frank Bateman, also re-elected unopposed for a fourth year, had to resign due to pressure of business. Both Frank and Margaret have given years of service to the game and one hopes that things will soon improve and allow them to return to administrative posts.

I am trying to combine these two jobs this season and since it is clearly a large task I hope for full assistance from County match secretaries.

CHANGED ORDER

Following Gloucestershire proposals at the annual general meeting, the order of play of sets is now changed. The chief features are that the match will no longer open with the opposing No. 3's, and that the clash of the two No. 1's will now be last but two instead of last of all.

A Staffordshire proposal to replace

the mixed doubles by a second women's singles achieved only a simple majority and not the votes of 75 per cent of those present as required. The subsequent postal ballot also failed narrowly. It would seem that the suggestion has much to commend it, and may succeed next time if better thought out.

FORREST AWARD

The Leslie Forrest award, presented annually to the person who has rendered the greatest service to table tennis, went to **Harry Edwards**, of Middlesex, for the 1963-64 season. Harry received this at the North Acton League Presentation Dance, and so well was the secret kept that he knew nothing about it until his name was announced.

Previous holders of the award were **C. F. Joyce** (Surrey) and **E. Reay** (Durham).

In the Junior play-off at Leicester on May 23/24 Alan Hydes, Stuart Gibbs and Glen Warwick were all undefeated, but did not meet each other. Beverley Sayer also won all her sets. Essex finished comfortable winners,

followed by Yorkshire, Staffordshire, Sussex and Monmouthshire in that order.

Turning to the constitution of divisions for 1964-65 it is pleasant to be able to report a further increase in teams entered. Cumberland enter a team in the Junior North for the first time, as do Lincolnshire (also in the North), Wiltshire (South-West) and Worcestershire (Midland). Oxfordshire move from the South-West to the Midland to reduce travelling.

Kent thrashed Cheshire 8-1 in the remaining Second Division play-off and with Staffordshire replace Hertfordshire and Warwickshire in the Premier. Middlesex will be trying for a sixth consecutive championship, but with David Creamer in the United States will find things tougher than ever this season.

Hertfordshire return to the Second South and Buckinghamshire are promoted to this division. Essex II although finishing third last season drop out and Suffolk are relegated, but the addition of Surrey II and Kent II leaves this division with one more team.

The new Cumberland team increases the numbers in the Second North to seven, and there is no change in the Second West. Staffordshire were promoted from the Second Midland and the relegation of Warwickshire from the Premier forces down their second team, divisional winners last year.

SOUTHERN INCREASE

The promotion of Nottinghamshire from the Midland Division leaves the number of teams unchanged. No net change in the Midland and an increase of two for the Southern, with second teams from Hampshire and Buckinghamshire, completes the picture.

It is interesting to compare the present day figures of 36 Counties, 73 teams (46 Senior, 27 Junior) with those of ten years ago, which were 32, 47 (40, 7). The large increase in teams entered reflects the increase in interest in Juniors—vital if the game is to continue to flourish.

Incidentally, if anyone has a copy of the 1954-55 Handbook I would be obliged if they could let me have it to complete the N.C.C. records.

A WORLD TRAVELLER

VICTOR BARNA has found himself a busy traveller since his appointment as Export Sales Executive of Dunlop Sports Co. nearly two years ago.

Last winter he made an extensive tour of the Middle and Far East. Next month he makes a three weeks' tour of Scandinavia, taking in the European Championships in Malmö.

In January he will be off again, this time to the West Indies and South America, visiting some 15 countries and cities.

The name of Barna is synonymous with table tennis all the world over. He won a total of 15 world titles—5 singles, 8 men's doubles, and 2 mixed doubles—in his long and illustrious career.

One of the penalties of such fame is that everywhere he goes he is expected to play exhibitions.

"They don't realise I'm not so young as I was," said Barna, who is now well past the 50 mark.



VICTOR BARN

The formation of divisions for season 1964-65 is:

PREMIER DIVISION

ESSEX, GLOUCESTERSHIRE, KENT, LANCA-SHIRE, MIDDLESEX, STAFFORDSHIRE, SURREY, YORKSHIRE.

SECOND DIVISIONS

Midland

GLAMORGAN, MONMOUTHSHIRE, NOTTING-HAMSHIRE, OXFORDSHIRE, WORCESTERSHIRE.

North

CHESHIRE, CUMBERLAND, DURHAM, LAN-CASHIRE, LINCOLNSHIRE, NORTHUMBERLAND, YORKSHIRE.

South

BEDFORDSHIRE, BUCKINGHAMSHIRE, HAMP-SHIRE, HERTFORDSHIRE, KENT, SURREY, SUSSEX.

West

CORNWALL, DEVON, DORSET, SOMERSET, WILTSHIRE.

REGIONAL DIVISIONS

Midland

DERBYSHIRE, OXFORDSHIRE, STAFFORD-SHIRE, WARWICKSHIRE, WORCESTERSHIRE.

Southern

BERKSHIRE, BUCKINGHAMSHIRE, CAM-BRIDGESHIRE, HAMPSHIRE, HERTFORDSHIRE, HUNTINGDONSHIRE, NORFOLK, SUFFOLK.

JUNIOR DIVISIONS

East

BUCKINGHAMSHIRE, ESSEX, HERTFORD-SHIRE, MIDDLESEX, NORFOLK, SUFFOLK.

Midland

LEICESTERSHIRE, OXFORDSHIRE, NOTTING-HAMSHIRE, STAFFORDSHIRE, WARWICKSHIRE, WORCESTERSHIRE.

North

CHESHIRE, CUMBERLAND, DURHAM, LAN-CASHIRE, NORTHUMBERLAND, YORKSHIRE.

South

BERKSHIRE, HAMPSHIRE, KENT, SURREY, SUSSEX.

South West

GLAMORGAN, GLOUCESTERSHIRE, MON-MOUTHSHIRE, WILTSHIRE.

COUNTY DIARY

PREMIER DIVISION

- October 3 Gloucestershire v Yorkshire, Grosvenor Hall, Grosvenor Street, Cheltenham 7 p.m.
- October 17 Essex v Kent
- October 30 Lancashire v Surrey, Rubery Owen Ltd., Great Sankey, Warrington 7.15 p.m.
- October 31 Lancashire v Middlesex, Atkinson's Vehicles Ltd., Walton-le-Dale, Near Preston 7.15 p.m.
- October 31 Gloucestershire v Essex, Cotham Grammar School, Cotham Lawn Road, Bristol, G.
- October 31 Staffordshire v Surrey
- Nov. 1 Staffordshire v Middlesex

SECOND DIVISION SOUTH

- October 3 Surrey v Hertfordshire, Central Electricity Research Lab., Glebe Road, Leatherhead 7 p.m.
- October 3 Sussex v Kent, North Rowdham Village Hall, North Rowdham, Near Chichester 7.15 p.m.
- October 3 Buckinghamshire v Hampshire
- October 17 Bedfordshire v Hampshire
- October 31 Surrey v Kent, Ronsons Sports Ground, Leatherhead 7 p.m.
- October 31 Sussex v Bedfordshire, Round Table Boys' Club, Priory Road, Hastings
- Nov. 7 Hertfordshire v Buckinghamshire

SECOND DIVISION NORTH

- October 3 Lancashire v Durham, Montague Burton's Halliwell Clothing Factory, Wapping Street, Bolton 7.15 p.m.
- October 3 Cumberland v Northumberland, Y.M.C.A., Irish Street, Whitehaven 2.30 p.m.
- October 17 Yorkshire v Cumberland, Huddersfield Passenger Transport Social Club 6 p.m.

SECOND DIVISION MIDLAND

- October 3 Monmouthshire v Oxfordshire
- October 3 Glamorgan v Warwickshire
- October 17 Nottinghamshire v Worcestershire
- October 31 Warwickshire v Monmouthshire
- October 31 Oxfordshire v Nottinghamshire
- October 31 Worcestershire v Glamorgan

SECOND DIVISION WEST

- October 17 Wiltshire v Dorset
- October 17 Devon v Somerset

MIDLAND DIVISION

- October 17 Worcestershire v Derbyshire
- October 17 Warwickshire v Staffordshire

SOUTHERN DIVISION

- October 3 Suffolk v Buckinghamshire
- October 3 Huntingdonshire v Berkshire, Eaton Socon Institute, Eaton Socon, St. Neots 7 p.m.
- October 10 Hertfordshire v Cambridgeshire
- October 17 Hertfordshire v Suffolk
- October 17 Huntingdonshire v Norfolk: Eaton Socon Institute, Eaton Socon, St. Neots 7 p.m.
- October 17 Norfolk v Hampshire
- October 17 Cambridgeshire v Hampshire, Y.M.C.A., Cambridge 7 p.m.
- October 31 Norfolk v Suffolk
- October 31 Buckinghamshire v Hertfordshire
- October 31 Hampshire v Huntingdonshire
- October 31 Berkshire v Cambridgeshire

JUNIOR DIVISION NORTH

- October 3 Cumberland v Northumberland
- October 17 Yorkshire v Cumberland, Huddersfield Passenger Transport Social Club 2.30 p.m.

JUNIOR DIVISION MIDLAND

- October 3 Staffordshire v Warwickshire
- October 17 Nottinghamshire v Worcestershire
- October 17 Warwickshire v Leicestershire
- October 31 Worcestershire v Staffordshire
- October 31 Oxfordshire v Nottinghamshire

JUNIOR DIVISION SOUTH

- October 31 Hampshire v Kent
- October 31 Berkshire v Surrey

JUNIOR DIVISION SOUTH-WEST

- October 14 Glamorgan v Monmouthshire
- October 17 Wiltshire v Gloucestershire

JUNIOR DIVISION EAST

- October 3 Norfolk v Middlesex
- October 10 Essex v Suffolk
- October 16 Middlesex v Hertfordshire, Johnson's of Hendon, Hendon Way, N.W.4. 7.15 p.m.
- October 31 Buckinghamshire v Hertfordshire
- October 31 Norfolk v Suffolk

GLOUCESTERSHIRE TITBITS

"ONLOOKER" has, due to other commitments, been forced into relinquishing his T.T. reporting and the task of publicising Gloucestershire efforts has been taken on by Mrs. J. P. Rowe (former Gloucestershire County secretary).

At the County annual general meeting the following officers were elected for the 1964/65 season: Chairman, Mr. F. Newell; secretary, Mr. R. F. Harris; treasurer, Mr. L. C. T. Davis; minute secretary, Mrs. P. Archdale; umpires secretary, Mrs. P. Archdale; publicity secretary, Mrs. J. P. Rowe.

The Duke of Beaufort has graciously consented to continue his presidency of the County Association.

Jack Carrington, E.T.T.A.'s Director of Coaching, visited Bristol in July for the second Coaches' Training Session organised by the county during the closed season and, during his talk to coaches from Gloucester, Bath, Bristol and Stroud, presented the National Coaching Diploma to Bryan Merrett (Gloucester) and D. Sherring (Bristol). D. Pope and D. Johns (Bristol) were awarded their Teaching Theory Certificates.

Five teams have entered the County League, run mainly for players who have not represented their county and fixtures are now well in hand.

Aubrey Simons has been elected president of the Bristol and District T.T.A. in succession to Mr. A. H. Lewis who is unable to continue in this office.

Pat Rowe.

JEWISH OLYMPICS

LOUIS HOFFMAN has been given the task of organising trials and selecting teams of men and women to represent Great Britain in the Maccabiah Games (the Jewish Olympics) in Israel next August and September.

Jewish players wishing to take part in the trials can obtain entry forms from L. Hoffman at 180, Brick Lane, London, E.1.

YOUNG BRISTOL PROSPECT

GLOUCESTERSHIRE look like producing another young table tennis prospect coming along to follow in the footsteps of Ian Harrison and Bryan Merrett.

He is **Michael Hodgkins**, a 14-year-old Bristol schoolboy, who was singled out by coach Ian Barclay at Butlin's Minehead camp for the finals of the *News of the World* National Table Tennis Coaching Scheme.

STAFFORDSHIRE

AFTER 12 YEARS

IT has taken Staffordshire twelve years to reach the Premier Division but now they are there interest in the county is running high.

At the time of writing, the county first team places are wide open except for the number one spot, where **Stan Ward**, of West Bromwich, looks an automatic choice. Intensive trials should solve the selectors problems when they get down to picking the team for the opening matches against Surrey and Middlesex.

One hardly needs a crystal ball to see that this will be a tough baptism for the Staffordshire side but whatever early results show, at least they will meet weaker teams later in the season. Even so it will be an uphill battle from the start and it will take an all out effort if Staffordshire are to stay up with the elite.

One man who will be a driving force this season is **Bert Hiscock**, the new county secretary. Bert, who has settled into his new rôle quickly and efficiently, is no stranger to the county scene. He was a member of the first Staffordshire side to play in the county championships and has since played no small part in getting the county where they are today.



BERT HISCOCK

A good time was had by all when players and officials attended a buffet dance recently to celebrate Staffordshire's entry into the Premier Division. A brochure has also been produced to mark the occasion.

It is on a sadder note that I have to report the ill health of the county chairman, **Malcolm Scott**. Taken ill while on holiday in Portugal, this hard working official has been told to take things easy and I am sure his many friends all over the county will wish him a speedy recovery.

John Pike

THE BISHOPSGATE TABLE TENNIS CLUB

230, Bishopsgate, E.C.2, has a few vacancies for members for the coming season. The Club meets at 6.15 p.m. every Monday and Friday. Write to the Hon. Secretary, H. A. Packett, 6, Ravenscourt Road, Hammersmith, W.6.

"Michael is the best discovery I have made in two years' coaching at Butlin's camps," said Barclay. "His ball control is near-perfect; he plays a terrific attacking game; and has the most consistent forehand drive I have ever come across in a boy of 14."

Michael, a pupil at Connaught Road Secondary School, Bristol, has been playing table tennis for a year at the Eagle House Youth Club.

Asked his ambition, Michael confidently answered:

"I mean to play table tennis for England. I want to travel the world playing as an international and eventually I want to become a coach."

Michael, who is the son of a long-distance lorry driver, and has a brother, Geoffrey, aged 4 and a sister, Susan, aged 12, certainly knows where he wants to go, and with confidence like that should be well on the way.



IAN BARCLAY KEEPS AN EYE ON MICHAEL HODGKINS.

YORKSHIRE NOTES

by **Malcolm Hartley**

A CHANGE OF JOBS

TWO top Yorkshire officials swapped jobs during the summer. **ALAN COOK**, competitions secretary for 15 seasons, was elected chairman; and **HARRY FLINTON**, chairman for ten years, became competitions secretary.

Mr. Cook has been a masterly marshal of the inter-league and inter-club series and the chairmanship passes into capable and experienced hands.

As for Mr. Flinton, I would like to put on record the nice tribute vice-president Colin Slater paid him at the association's annual dinner: "**By his devotion and his tolerance in committee, and above all, perhaps, his sincerity, Harry Flinton has applied and dedicated himself to the job of chairman and become a very fine leader of table tennis in this county.**"

I was pleased that Herbert Dainty is to continue as N.C.C. secretary. In his first season in full charge of the county teams he did a first-class job.

Three deserving officials have received the Yorkshire badge for outstanding services—**WALTER MITTON**, secretary of the association for eight years; **HAROLD LITCHFIELD**, treasurer for five years and an executive member since 1950; and **ALAN THOMPSON**, the former county captain, who has been coaching secretary since 1956.

At the annual dinner **GEORGE**

SCRUTON (Harrogate) was presented with his national umpire's award; and **ALAN HYDES** completed an outstanding season by earning the county's Leslie Forrest Memorial Award.

On the playing side Michael Dainty shook Yorkshire and Doncaster with notification that he does not wish to be considered for selection this season. He made five Premier Division appearances last season without touching his best form.

Mike Symonds has decided not to join Yorkshire although he is working at Sheffield, and with David Bevan abroad the season opens with speculation about No. 3 spot in the Premier Division side.

Home fixtures, to be played at Bradford, are v. Kent, November 21; Essex, December 19; Staffordshire, March 20; and Lancashire, April 3.

SUSSEX

**WYLES
RESIGNS**

THE Sussex T.T.A. started the season with a severe blow due to the resignation of their secretary for the past seven years, **Charles Wyles**, of Hastings. Mr. Wyles, who was well known in table tennis, being associated with Kent before coming to Sussex, was a national umpire and a familiar figure at many tournaments. He is understood to have resigned for personal reasons.

Persuaded to come out of retirement to replace him is **Lilian Rymill** for several years secretary of the Worthing T.T.A.

More gains and losses have occurred in the playing arena where **Peter Shead** and **Ann Woodford** are not expected to appear for the county this season. Shead has over-riding business commitments while Mrs. Woodford, Sussex No. 1 for most of 13 years, has retired from county play but is still expected to compete in county and local events.

CREDIT SIDE

On the credit side, **Judy Williams**, living in Eastbourne and studying at Birmingham University, is partially available for the Sussex senior side while her brother Peter has come in at No. 4 in the senior ratings. In the senior trials Peter Williams held four match points before failing to the brilliant defence of the Nigerian Tunde Ogundipe, rated No. 3.

The new ranking list is:
MEN: 1, R. Chandler (Brighton); 2, G. Whalley (Crawley); 3, T. Ogundipe (Brighton); 4, P. Williams (Eastbourne); 5, L. Gunn (Brighton); 6, R. Stace (Brighton); 7, J. Beasley (Eastbourne); 8, R. Pierce (Brighton); 9, J. Dobell (Eastbourne); 10, V. Pickett (Worthing); 11, T. Riley (Crawley).

WOMEN: 1, J. Williams (Eastbourne); 2, A. Woodford (Eastbourne); 3, D. Barontini (Crawley); 4, J. Coleman (Hastings); 5, M. Beany (Hastings); 6, C. Lindsley-Leake (Brighton); 7, I. Gillett (Eastbourne); 8, P. Wales (Worthing).

J. WOODFORD.

**Hampshire
Favour Youth**

HAMPSHIRE, entering three teams in the National County championships for the first time this season, are putting an emphasis on youth.

To provide the right incentive to the younger players, only those under 21 will be considered for the team making its debut in the Southern Division.

The other two teams are in the Second Division South and Junior South.

This new approach is a shining example of the modern trend to "Catch Them Young," and is in keeping with the increasing younger following for the game throughout the county.

Teddy Grant.

FIXTURE ENGAGEMENTS

In the Open Tournaments below, events shown in the column are *additional* to M.S., W.S., M.D., W.D., and X.D. in every case. Tournaments marked (R) are Restricted. Suitable entries are inserted in this diary without charge but all organisers should send information to the Editor at the earliest possible date.

Date	Title and Venue	Extra Events	Organising Secretary
1964			
9-10	North of England Drill Hall H.Q. 42 Div./Dist. Engineers (T.A.), Seymour Grove, Old Trafford, Manchester, 16 Closing date: Sept. 26, 1964	J.B.S. J.G.S.	L. W. Jones, 261, Maudeth Road, Burnage, Manchester, 19.
9-11	BALKAN GAMES (T.T. Section) Athens.		
17-18	NETHERLANDS OPEN		
24	Northumberland Open (Newcastle) No. 1 Canteen, Ministry of Pensions and National Insurance, Benton Park Road, Newcastle-upon-Tyne.	J.S. V.S.	T. A. Morpeth, 59, Preston Avenue, North Shields.
24-25	Sussex Open White Rock Pavilion, Hastings. Closing date: Oct. 10, 1964	V.S.	D. N. Tyler, Prudential Chambers, 1, York Buildings, Hastings.
24-25	AUSTRIAN OPEN (Innsbruck)		
31	Hull and East Riding Open Madeley St. Baths, Hessle Road, Hull. Closing date: Oct. 21, 1964.	J.B.S. J.G.S. V.S.	K. H. F. Jordan, "Burnlea," 57, Skillings Lane, Brough, E. Yorks.
Nov. 6-7	Merseyside Open Dunlop Rubber Co. Canteen, Speke, Liverpool 24. Closing date: Oct. 21, 1964.	J.B.S. J.G.S. V.S.	B. A. Leeson, 16, Avolon Road, Liverpool, 12.
7	Swansea Open Drill Hall, Richardson Street, Swansea. Closing date: Oct. 31, 1964		A. D. Morris, 76, Wimmerfield Crescent, Killay, Swansea.
7-8	Kent Junior Open Marine Pavilion, Folkestone. Closing date: Oct. 21, 1964. (Under 15's B. & G.S.) (Under 15's B. & G.D.) (Under 15's X.D.) (Under 13's B. & G.S.) (Under 13's B. & G.D.) (Under 11's B. & G.S.)	J.B.S. J.G.S. J.B.D. J.G.D. J.X.D.	F. G. Mannooch, 216, Park Road, Sittingbourne, Kent.
14	Birmingham Open (Birmingham) Rover Sports and Social Club, Lode Lane, Solihull, Warwks.		M. Goldstein, 415, Moseley Road, Birmingham, 12.
15	Bournemouth (R) Open Drill Hall, Holdenhurst Road, Bournemouth.		B. Roberts, 45c, Porchester Road, Bournemouth.
22-29	EUROPEAN CHAMPIONSHIPS (Malmoe, Sweden)		
22	Portsmouth (R) Open South Parade Pier, Southsea. Closing date: Nov. 7, 1964	J.B.S. J.G.S.	P. Goldring, 52, Winter Road, Southsea, Hants.
26-28	Bangor Open Dufferin Hall, Bangor, Co. Down, N. Ireland.	J.B.S.	T. Huggins, 18, Fairview Gardens, Bangor, Co. Down, N. Ireland.
28	Cumberland Open High Duty Alloys, Distington, Cumberland.	J.S. J.D.	R. Rigg, 1, Park View, Whitehaven, Cumberland.
Dec. 2-5	POLISH OPEN		
5-6	Newbury Open Corn Exchange, Mkt. Place, Newbury, Berks. Closing date: Nov. 14, 1964.	J.B.S. J.G.S. J.B.D. J.G.D. J.X.D. V.S.	A. A. J. Mosson, 29, Croft Road, Newbury, Berks.

NEWS FROM CANADA

RECOGNISE ANYONE?

by JOSE KING



BOB DUTRU (London) Ottawa his wife CAROLYN; BRIGITTE CRANE, COLIN CRANE, (Nottingham) Montreal.

What happens to the table tennis player when he or she decides to emigrate? I am sure that folks back home and even those away like to hear news of each other and TABLE TENNIS can offer a happy medium for this.

As one of those who left Birmingham to settle in Toronto it was a pleasure at the Eastern Canada Open to meet up with others from the "Old Country" who had gathered in Ottawa to challenge in this end of the season event.

To record the occasion I took the enclosed pictures of the "exiles." Do you recognise any of your old friends here?

The exiles were not quite so successful as they would have liked, but Derek Marsham, formerly of Romford won the Class "B" singles, while Colin Crane, formerly of Nottingham was runner-up in the men's doubles with E. Schultz.

John McClellan junior, a true Canadian, beat Canadian Champion Max Marinko in the men's "A" singles final after the expedite rule had been enforced. This was the second victory in a row for McClellan for he also beat Marinko in the Central Ontario Open.

Denise Hunnis, of Montreal beat Jenny Marinko in the women's "A" singles final. A promising young player is 13 years old Violetta Nesukaitis, winner of the "B" singles. She has a sound game and a temperament to match.



Top: VIVIEN LEVY (Portsmouth) Ottawa; DEREK MARSHAM (Romford) Ottawa; BETTY TWEEDY (Welwyn Garden City) Montreal; KEN KERR (Newcastle-upon-Tyne) Toronto; Centre: GORDON LEVY; BOB JEWELL (Dublin) Toronto; MIKE BEHAM (Dublin) Sarnia, Ontario; Bottom: MARIE KERR; JOSE TOMKINS (Birmingham) Toronto.

RESULTS

Men's 'A' Singles: John McClellan bt Max Marinko 18, 18, 17. Class "B", Derek Marsham bt Mike Beham —18, 13, 19, 16. Class "C", H. Hinnecke bt L. Petho 11, —8, 12, 21, 17.

Women—Class "A", D. Hunnis bt J. Marinko 16, 15, —19, 11. Class "B", V. Nesukaitis bt L. Griffin 17, 19, —13, 11.

Men's Doubles: M. Zulpis/L. Eichvald bt C. Crane/ E. Schultz 13, 16, 15. Women's Doubles: J. Marinko/V. Adminis bt D. Hunnis/V. Nesukaitis 12, 14, 18.

Mixed Doubles: Zulpis/Adminis bt L. Eichvald/J. Tompkins 12, 20, 15.

English Table

Tennis Association

Patron: Her Majesty The Queen.

President: Hon. I. G. S. Montagu.

Chairman: I. C. Eyles.

Deputy Chairman: G. James.

Honorary Treasurer: T. Blunn.

Secretary: D. P. Lowen.

Office of the Association: 26/29, Park Crescent, London, W.1 (Telephone: LANgham 6312).

Published on the first Saturday of each month, October to May inclusive. Postal Subscription 10s. for eight issues, post free.

Advertisements: R. Boniface, 161 Hoe Street, Walthamstow, London, E.17.

Circulation Manager: Louis Hoffman, 180 Brick Lane, London, E.1. Tel.: Shoreditch 7391.

Editorial: W. Harrison Edwards, c/o Sports Press, 142 Fleet Street, London, E.C.4 (FLE 5352).

CLASSIFIED ADVERTISEMENTS

6d. per word prepaid (minimum 12 words).
Box Number, including postage, 2s.

GOODS FOR SALE

CLOTH CLUB BADGES made to your own design, any quantity. Low prices, quick delivery.—S. A. Cory & Company, 20, St. John's Hill, London, S.W.11.

DRAW SHEETS

DRAW SHEETS for 64 entries—1/6 each. 20 for 27/6. Result Pads 3s. per pad of 100 leaves. Available from Walthamstow Press, Guardian House, Forest Road, London, E.17.

SECOND-HAND TABLES

SECOND-HAND TABLES for Sale. Apply —Alec Brook (Sports Equipment) Ltd., 124 Euston Road, London, N.W.1. (Tel.: Euston 3772).

FOR SALE. Almost brand-new Dunlop "Barna" Tennis Table. Very little used. Free delivery Birmingham/Wolverhampton area. Offers to Griffin, 149 Dudley Road West, Tividale, Tipton.

For details of DISPLAY ADVERTISING, contact: R. W. C. Boniface, Table Tennis Magazine, 161 Hoe Street, London, E.17.